

*ARYA Atherosclerosis* has been licensed as a scientific & research journal by the Iranian commission for medical publications, ministry of health and medical education

Serial Issue: 65

Volume 14, Issue 3, May 2018

Print ISSN: 1735-3955

Online ISSN: 2251-6638

### Original Article(s)

#### Bridging the theory-practice gap in Iranian emergency nursing education

Shima Safazadeh, Alireza Irajpour, Nasrollah Alimohammadi, Fariba Haghani ..... 105-114

#### Association between sleep duration and electrocardiographic ischemic changes in middle-aged population: Isfahan Healthy Heart Program

Mahdi Khani, Jamshid Najafian, Marzieh Taheri, Afshan Akhavan-Tabib, Shidokht Hosseini ..... 115-121

#### Serum interleukin-18 and extent of coronary artery disease in unstable angina

Masoumeh Sadeghi, Maryam Gheraati, Azam Soleimani, Afshin Amirpour, Marzieh Taheri, Safoura Yazdekhasti, Elham Valikhani ..... 122-127

#### Transulnar versus transradial approach for coronary angiography and angioplasty: Considering their complications

Farshad Roghani-Dehkordi, Rooholah Mansouri, Alireza Khosravi, Behzad Mahaki, Mehdi Akbarzadeh, Mohammad Kemani-Alghoraishi .... 128-131

Physicians' knowledge, attitudes, and practice for hypertension management: A cross-sectional study in Hormozgan province, Iran  
Hossein Farshidi, Marzieh Nikparvar, Iran Rostami-Qeshmi, Roghaieh Ezzati-Rad, Afsoon Piroozan, Elham Boushehri ... 132-138

### Case Report(s)

#### Gerbode type defect after trans-septal puncture for ablation of left-sided accessory pathway

Masoud Eslami, Reza Mollazadeh, Roya Sattarzadeh-Badkoubeh ... 139-141

#### Combined association of liver and renal injury by intra-aortic balloon pump malposition

Feridoun Sabzi, Aghighheh Heidari, Reza Faraji ..... 142-144

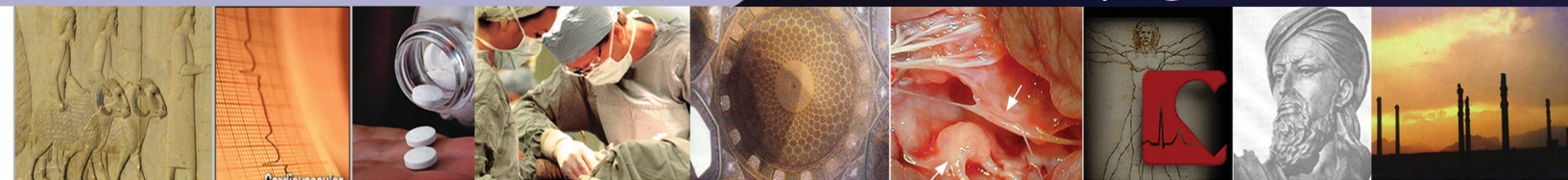
### Letter(s) to Editor

#### The importance of screening sleep disorders in outpatient cardiac rehabilitation programs in Iran

Habibolah Khazaie, Saeid Komasi ..... 145-146

#### Indexed by:

- ✓ ISI
- ✓ PubMed
- ✓ PubMed Central
- ✓ Scopus
- ✓ Islamic World Science Citation (ISC)
- ✓ WHO/EMRO/Index Medicus
- ✓ NLM Catalog
- ✓ Open J Gate
- ✓ Directory of Open Access Journals (DOAJ)
- ✓ EBSCO
- ✓ Embase
- ✓ Google Scholar
- ✓ Index Copernicus
- ✓ IranMedex
- ✓ Magiran
- ✓ ProQuest
- ✓ Scientific Information Database





---

# **ARYA** *Atherosclerosis*

---

Official Journal of the Isfahan Cardiovascular Research Institute, Isfahan University of Medical Sciences

## **EDITOR-IN-CHIEF**

### **Masoumeh Sadeghi, MD**

Professor of Cardiology, Cardiac Rehabilitation Research Center, Isfahan Cardiovascular Research Institute, Isfahan University of Medical Sciences, Isfahan, Iran  
aryachiefeditor@gmail.com

---

## **CHAIRMAN**

### **Nizal Sarrafzadegan, MD**

Professor of Cardiology, Isfahan Cardiovascular Research Institute, Isfahan University of Medical Sciences, Isfahan, Iran

---

## **ASSOCIATE EDITOR**

### **Mojgan Gharipour, PhD**

Molecular Epidemiology, Isfahan Cardiovascular Research Institute, Isfahan University of Medical Sciences, Isfahan, Iran

## **STATISTICAL CONSULTANT**

### **Awat Feizi, PhD**

Associate Professor, Department of Biostatistics and Epidemiology School of Public Health, Isfahan University of Medical Sciences, Isfahan, Iran

## **SECTION EDITORS**

**Mojgan Gharipour, MSc, PhD Candidate**, Molecular Epidemiology, Isfahan Cardiovascular Research Institute, Isfahan University of Medical Sciences, Isfahan, Iran

**Noushin Mohammadifard, MSc, PhD Candidate**, Isfahan Cardiovascular Research Center, Isfahan Cardiovascular Research Institute, Isfahan University of Medical Sciences, Isfahan, Iran

**Hamidreza Roohafza, MD**, Assistant Professor, Isfahan Cardiovascular Research Center, Isfahan Cardiovascular Research Institute, Isfahan University of Medical Sciences, Isfahan, Iran

**Golnaz Vaseghi, Pharm D, PhD**, Assistant Professor, Applied Physiology Research Center, Isfahan Cardiovascular Research Institute AND Department of Pharmacology, School of Pharmacy and Pharmaceutical Sciences, Isfahan University of Medical Sciences, Isfahan, Iran

## **MANAGING EDITOR**

### **Nahid Sadeghi, MSc**

MSc in Computer Engineering, Isfahan Cardiovascular Research Institute, Isfahan University of Medical Sciences, Isfahan, Iran

---

## **REVIEWER SESSION MANAGER**

### **Pouya Nezafati, MD**

Head of Cardiac Surgery Research Committee, Department of Cardiac Surgery, Mashhad University of Medical Sciences, Mashhad, Iran

---

**Owner: Isfahan University of Medical Sciences**

Email: [publications@mui.ac.ir](mailto:publications@mui.ac.ir)

**Publisher: Vesnu Publications**

**Tel/fax:** +98 31 32224335, +98 31 32224382

<http://farapub.com>

Email: [farapublications@gmail.com](mailto:farapublications@gmail.com)

---

**Circulation:** 500

**Distribution:** International

**Language:** English

**Interval:** Bimonthly

**Print ISSN:** 1735-3955, **Online ISSN:** 2251-6638

---

**Address:** ARYA Journal Office, Shahid Rahmani Alley, Moshtagh 3rd St, Isfahan Cardiovascular Research Institute, Isfahan, Iran

**Postal Code:** 8166173414

**Tel:** + 98 31 36115206

**Fax:** +98 31 36115311

**Email:** [aryaeditor4@gmail.com](mailto:aryaeditor4@gmail.com)

**Web:** [arya.mui.ac.ir](http://arya.mui.ac.ir)

---

---

**EDITORIAL BOARD (Alphabetic order)**

---

**Peyman Adibi, MD**

Associate Professor, Department of Gastroenterology, Isfahan University of Medical Sciences, Isfahan, Iran

**Alireza Ahmadi, MD**

Department of Preventive Pediatric Cardiology, Isfahan Cardiovascular Research Center, Isfahan, Iran

**Mohammad Akbari, PhD Candidate**  
Nursing and Midwifery Care Research Center, Department of Mental Health Nursing, School of Nursing and Midwifery, Isfahan University of Medical Sciences, Isfahan, Iran

**Mousa Alavi, PhD**

Nursing and Midwifery Care Research Center, Isfahan University of Medical Sciences, Isfahan, Iran

**Masoud Amini, MD**

Professor, Department of Endocrinology, Endocrine and Metabolism Research Center, Isfahan University of Medical Sciences, Isfahan, Iran

**Bahram Aminian, MD**

Professor, Department of Medicine and Cardiology, Shiraz University of Medical Sciences, Shiraz, Iran

**Sedigheh Asgary, PhD**

Professor, Isfahan Cardiovascular Research Center, Cardiovascular Research Institute, Isfahan, Iran

**Leila Azadbakht, PhD**

Associate Professor, Department of Nutrition, School of Health, Isfahan University of Medical Sciences, Isfahan, Iran

**Alexandre Azmoun, MD**

Department of Cardiac Surgery, Centre Chirurgicale Marie Lannelongue, Le Plessis-Robinson, France

**Majid Barekattain, MD**

Associate Professor, Department of Psychiatry, Isfahan University of Medical Sciences, Isfahan, Iran

**Nooshin Bazargani, MD**

Board Member of Emirates Cardiac Society Board, Member of World Heart Federation Consultant Cardiologist, Dubai Hospital, Dubai

**Maryam Boshtam, MSc**

PhD Candidate, Isfahan Cardiovascular Research Center, Isfahan University of Medical Sciences, Isfahan, Iran

**Arun Chockalingam, MD**

Professor, School of Medicine, Simon Fraser University, Burnaby, BC

**Minoo Dianatkah**

MSc in Biostatistics, Isfahan Cardiovascular Research Center, Cardiovascular Research Institute, Isfahan University of Medical Sciences, Isfahan, Iran

**Abolghasem Djazayeri, MD, PhD**

Professor, Department of Nutrition and Biochemistry, School of Public Health and Institute of Public Health Research, Tehran University of Medical Sciences, Tehran, Iran

**Ahmad Esmailzadeh, PhD**

Associate Professor, Department of Nutrition, Department of Nutrition, School of Public Health, Isfahan University of Medical Sciences, Isfahan, Iran

**Farzan Filsoofi, MD,**

Professor of Cardiothoracic Surgery, Mount Sinai Medical School, New York, New York, USA

**Armen Gaspayan, MD, PhD**

Associate Professor, School of Medicine, Chief Editor of European Science Editing, UK

**Yusof Gheisari, MD, PhD**

Assistant Professor, Department of Biotechnology, School of Medicine, Isfahan University of Medical Sciences, Isfahan, Iran

**Allahyar Golabchi, MD**

Fellowship of Interventional Electrophysiology, Cardiac Electrophysiology Research Center, Rajaie Cardiovascular Medical and Research Center, Tehran University of Medical Sciences, Tehran, Iran

**Shaghayegh Haghjooy Javanmard, PhD**

Physiology Research Center, Isfahan University of Medical Sciences, Isfahan, Iran

**Hoda Javadikasgari, MD**

Department of Thoracic and Cardiovascular Heart and Vascular Institute, Cleveland Clinic, Cleveland, Ohio, USA

**Roya Kelishadi, MD**

Professor, Department of Pediatrics, Child Health Promotion Research Center, School of Medicine, Isfahan University of Medical Sciences, Isfahan, Iran

**Hossein Khosravi-Boroujeni, PhD**

Department of Public Health, School of Medicine AND Menzies Health Institute, Gold Coast Campus, Griffith University, Queensland, Australia

**Darwin Raymond Labarthe, MD**

Professor, Department of Preventive Medicine, Feinberg School of Medicine, Northwestern University, Evanston, IL, United States

**Bagher Larjani, MD**

Professor, Research Institute for Endocrine Sciences (R.I.E.S.), Tehran University of Medical Sciences, Tehran, Iran

**Mohammad Lotfi, MD**

Professor, Department of Neurology, Tehran University of Medical Sciences, Tehran, Iran

**Hossein Malekafzali, MD, PhD**

Professor, Department of Epidemiology and Biostatistics, School of Public Health, Tehran University of Medical Sciences, Tehran, Iran

**Mohammad Hossein Mandegar, MD**

Professor, Department of Cardiovascular Surgery, Tehran University of Medical Sciences, Tehran, Iran

**Arya Mani, MD**

Professor, Department of Internal Medicine, School of Medicine, Yale University, New Haven, CT, United States

**Gholamreza Masoumi, MD**

Associate Professor, Department of Anesthesiology, School of Medicine, Isfahan University of Medical Sciences, Isfahan, Iran

**Saeed Mirsadraee, MD**

Consultant Cardiothoracic Radiologist, Department of Radiology, Royal Infirmary of Edinburgh AND Senior Lecturer in Clinical Radiology, University of Edinburgh, Edinburgh, United Kingdom

**Arash Mokhtari, MD**

PhD, Senior Consultant Cardiac Surgeon, Department of Cardiothoracic Surgery, Skane University Hospital, Lund, Sweden

**Ahmad Movahedian, PhD**

Professor, School of Pharmacy, Isfahan University of Medical Sciences, Isfahan, Iran

**Mohammad Navab, MD, PhD**

Professor, Department of Medicine, David Geffen School of Medicine, The University of California, Los Angeles, CA, United States

**Ebrahim Nematipour, MD**

Department of Cardiology, Tehran Heart Center, Tehran University of Medical Sciences, Tehran, Iran

**Mohammad Hassan Nezafati, MD**

Associate Professor, Cardiac Surgery Department of Cardiac Surgery, School of Medicine AND Imam Reza General Hospital, Mashhad University of Medical Sciences, Mashhad, Iran

**Pouya Nezafati, MD**

Head of Cardiac Surgery Research Committee, Department of Cardiac Surgery, Mashhad University of Medical Sciences, Mashhad, Iran

**Sania Nishtar, MD**

Professor, Department of Cardiology, Founder and President, Heart file, Islamabad, Pakistan

**Firidon Noohi, MD**

Professor, Department of Cardiology, Shaheed Rajaie Cardiovascular Medical and Research Center, Tehran, Iran

**Katayoun Rabei, MD**

PhD Candidate, Isfahan Cardiovascular Research Institute, Isfahan University of Medical Sciences, Isfahan, Iran

**Fatemeh Rajati, PhD**

Department of Health Education and Promotion, School of Health, Kermanshah University of Medical Sciences, Kermanshah, Iran

**Jacques A. Robin, MD, PhD**

Associate Professor of Adult Heart Transplantation and Mechanical Assist Devices, Hopital Cardiovasculaire Louis Pradel, Lyon, France

**Mohammad Saadatnia, MD**

Associate Professor, School of Medicine, Isfahan University of Medical Sciences, Isfahan, Iran

**Javad Shahabi, MD**

Assistant Professor, Department of Cardiology, School of Medicine, Isfahan University of Medical Sciences, Isfahan, Iran

**Shahrezad Shahidi, MD**

Associate Professor, Department of Nephrology, School of Medicine, Isfahan University of Medical Sciences, Isfahan, Iran

**Vahid Shaygannejad, MD**

Associate Professor, Department of Neurology, School of Medicine, Isfahan University of Medical Sciences, Isfahan, Iran

**Mohammad Shenasa, MD**

Professor, Department of Cardiovascular Services, O'Connor Hospital, San Jose, CA, United States

**Shahin Shirani, MD**

Associate Professor, Department of Cardiology, School of Medicine, Isfahan University of Medical Sciences, Isfahan, Iran

**Farimah Shirani**

Cardiac Rehabilitation Research Center, Cardiovascular Research Institute, Chamran Hospital, Isfahan University of Medical Sciences, Isfahan, Iran

**Bahram Soleimani, PhD**

Associate Professor, Department of Epidemiology and Biostatistics, Najafabad Branch, Islamic Azad University, Isfahan, Iran

**Kusam Sudhakar Reddy, MD, DM**

Professor, Department of Cardiology, All India Institute of Medical Sciences, New Delhi, India

**Mohammad Talaei, PhD**

Saw Swee Hock School of Public Health, National University of Singapore, Singapore AND Isfahan Cardiovascular Research Center, Cardiovascular Research Institute, Isfahan University of Medical Sciences, Isfahan, Iran

**Reza Tavakoli, MD**

Senior Staff Cardiac Surgeon, Department of Cardiovascular Surgery, Canton Hospital Lucerne, Zurich, Switzerland

**Ali Akbar Tavassoli, MD**

Associate Professor, Cardiac Rehabilitation Research Center, Isfahan Cardiovascular Research Institute, Isfahan University of Medical Sciences, Isfahan, Iran

**E Vartianian, PhD**

Professor, Department of Epidemiology, National Public Health Institute, Helsinki, Finland

---

# ARYA Atherosclerosis

## INSTRUCTIONS FOR AUTHORS

### MANUSCRIPTS

Manuscripts containing original material are accepted for consideration if neither the article nor any part of its essential substance, tables, or figures has been or will be published or submitted elsewhere before appearing in the *Journal*. This restriction does not apply to abstracts or press reports published in connection with scientific meetings. Copies of any closely related manuscripts must be submitted along with the manuscript that is to be considered by the *Journal*. Authors of all types of articles should follow the general instructions given below. Please see Types of Articles for specific word counts and instructions.

### SUBMISSION

- Only online submission is acceptable. Please submit online at: <http://www.aryajournal.ir>
- Manuscripts should be divided into the following sections: (1) Title page, (2) Abstract and Keywords, (3) Introduction, (4) Methods, (5) Results, (6) Discussion, (7) Acknowledgements, (8) Authors contribution, (9) References, (10) Figures' legend, (11), Tables and (12) Appendices. Figures should be submitted in separate files using JPEG or TIF format.
- Prepare your manuscript text using a Word processing package (save in .doc or .rtf format NOT .docx). Submissions of text in the form of PDF files are not permitted.

### COVER LETTER

A covering letter signed by corresponding author should provide full contact details (include the address, telephone number, fax number, and Email address). Please make clear that the final manuscript has been seen and approved by all authors, and that the authors accept full responsibility for the design and conduct of the study, had access to the data, and controlled the decision to publish. There should also be a statement that the manuscript is not under submission elsewhere and has not been published before in any form.

### AUTHORSHIP

As stated in the Uniform Requirements for Manuscripts Submitted to Biomedical Journals, credit for authorship requires substantial contributions to: (a) conception and design, or analysis and interpretation of data; (b) the drafting of the article or critical revision for important intellectual content and (c) final approval of the version to be published. Authors should meet

conditions a, b and c. All authors must sign authorship form attesting that they fulfill the authorship criteria. Your submitted manuscript will not be processed unless this form is sent. There should be a statement in manuscript explaining contribution of each author to the work. Those contributors who did not fulfill authorship criteria should be listed in acknowledgments.

Any change in authorship after submission must be approved in writing by all authors.

### ASSURANCES

In appropriate places in the manuscript please provide the following items:

- If applicable, a statement that the research protocol was approved by the relevant institutional review boards or ethics committees and that all human participants gave written informed consent
- The source of funding for the study
- The identity of those who analyzed the data
- Financial disclosure or a statement indicating "None" is necessary.

### TITLE PAGE

With the manuscript, provide a page giving the title of the paper; titles should be concise and descriptive (not declarative). Title page should include an abbreviated running title of 40 characters, the names of the authors, including the complete first names and no more than two graduate degrees, the name of the department and institution in which the work was done, the institutional affiliation of each author. The name, post address, telephone number, fax number, and Email address of the corresponding author should be separately addressed. Any grant support that requires acknowledgment should be mentioned on this page. Word count of abstract and main text as well as number of tables and figures and references should be mentioned on title page. If the work was derived from a project or dissertation, its code should also be stated. For clinical trials, a registry number like Iranian Registry of Clinical Trials (IRCT) should also be provided.

**Affiliation model:** Academic Degree, Department, Institute, City, Country

**Example:** Associate Professor, Department of Cardiology, School of Medicine, Isfahan University of Medical Sciences, Isfahan, Iran

## ABSTRACT

Provide on a separate page an abstract of not more than 300 words. This abstract should consist of four paragraphs, labeled **Background, Methods, Results, and Conclusion**. They should briefly describe the problem being addressed in the study, how the study was performed, the salient results, and what the authors conclude from the results, respectively. Three to 10 keywords may be included. Keywords are preferred to be in accordance with MeSH terms. Find MeSH terms: <http://www.ncbi.nlm.nih.gov/mesh>

## CONFLICT OF INTEREST

Authors of research articles should disclose at the time of submission any financial arrangement they may have with a company whose product is pertinent to the submitted manuscript or with a company making a competing product. Such information will be held in confidence while the paper is under review and will not influence the editorial decision, but if the article is accepted for publication, a disclosure will appear with the article.

Because the essence of reviews and editorials is selection and interpretation of the literature, the *Journal* expects that authors of such articles will not have any significant financial interest in a company (or its competitor) that makes a product discussed in the article.

## REVIEW AND ACTION

Submitted papers will be examined for the evidence of plagiarism using some automated plagiarism detection service. Manuscripts are examined by members of the editorial staff, and two thirds are sent to external reviewers. We encourage authors to suggest the names of possible reviewers, but we reserve the right of final selection. Communications about manuscripts will be sent after the review and editorial decision-making process is complete. After acceptance, editorial system makes a final language and scientific edition. No substantial change is permitted by authors after acceptance. It is the responsibility of corresponding author to answer probable questions and approve final version.

## COPYRIGHT

Isfahan Cardiovascular research Institute (ICRI) is the owner of all copyright to any original work published by the ARYA Journal. Authors agree to execute copyright transfer forms as requested with respect to their contributions accepted by the Journal. The ICRI have the right to use, reproduce, transmit, derive works from, publish, and distribute the contribution, in the *Journal* or otherwise, in any form or medium. Authors will not use or authorize the

use of the contribution without the Journal Office' written consent

## JOURNAL STYLE

Use normal page margins (2.5 cm), and double-space throughout.

### Tables

Double-space tables and provide a title for each.

### Figures

Figures should be no larger than 125 (height) x 180 (width) mm (5 x 7 inches) and should be submitted in a separate file from that of the manuscript. The name of images or figures files should be the same as the order that was used in manuscript (fig1, fig2, etc.). Only JPEG, TIF, GIF and EPS image formats are acceptable with CMYK model for colored image at a resolution of at least 300 dpi. Graphs must have the minimum quality: clear text, proportionate, not 3 dimensional and without disharmonic language. Electron photomicrographs should have internal scale markers.

If photographs of patients are used, either the subjects should not be identifiable or the photographs should be accompanied by written permission to use them. Permission forms are available from the Editorial Office.

Medical and scientific illustrations will be created or recreated in-house. If an outside illustrator creates the figure, the *Journal* reserves the right to modify or redraw it to meet our specifications for publication. The author must explicitly acquire all rights to the illustration from the artist in order for us to publish the illustration. Legends for figures should be an editable text as caption and should not appear on the figures.

### References

The Vancouver style of referencing should be used. References must be double-spaced and numbered as superscripts consecutively as they are cited. References first cited in a table or figure legend should be numbered so that they will be in sequence with references cited in the text at the point where the table or figure is first mentioned. List all authors when there are six or fewer; when there are seven or more, list the first six, then "et al." In the following some examples are listed:

1. McLaughlin TJ, Aupont O, Bambauer KZ, Stone P, Mullan MG, Colagiovanni J, et al. Improving psychologic adjustment to chronic illness in cardiac patients. The role of depression and anxiety. *J Gen Intern Med* 2005; 20(12): 1084-90.
2. Bonow RO, Mann DL, Zipes DP, Libby P. Braunwald's Heart Disease E-Book: A Textbook of Cardiovascular Medicine. 7<sup>th</sup> ed. Philadelphia, PA: Elsevier Health Sciences; 2007. p. 1976, 1981, 1982.

3. Gaston M. The psychological care of patients following a myocardial infarction [Online]. 2003; Available from: URL: <http://www.nursingtimes.net/the-psychological-care-of-patients-following-a-myocardialinfarction/199464.article/>

### Units of Measurement

Authors should express all measurements in conventional units, with Système International (SI) units given in parentheses throughout the text. Figures and tables should use conventional units, with conversion factors given in legends or footnotes. In accordance with the Uniform Requirements, however, manuscripts containing only SI units will not be returned for that reason.

### Abbreviations

Except for units of measurement, abbreviations are discouraged. Consult *Scientific Style and Format: The CBE Manual for Authors, Editors, and Publishers* (Sixth edition. New York: Cambridge University Press, 1994) for lists of standard abbreviations. Except for units of measurement, the first time an abbreviation appears, it should be preceded by the words for which it stands.

### Drug Names

Generic names should generally be used except for studies on comparative effects of different brands. When proprietary brands are used in research, include the brand name and the name of the manufacturer in parentheses in the Methods section.

**For any more detail about the writing style for your manuscripts refer to:**

**<http://www.icmje.org>**

**Try to prepare your manuscript in accord with the scientific writing checklists available in EQUATOR Network:**

**<http://www.equator-network.org>**

### AFTER YOUR SUBMISSION

When a manuscript arrives to ARYA office, a staff member checks it to make sure that all materials required for submission are included. If everything is present, the article is registered in office and referred to the managing editor.

The first step the manuscript makes on its editorial journey is on the desk of the editor-in-chief, who reviews each submission (in his absence this is done by the managing editor) and decides on the basis of its general content whether it is appropriate even for consideration for publication. Each of the remaining scientific manuscripts is assigned to an associate editor with expertise in the subject area covered by the study, who makes an independent assessment of

the value and validity of the paper. If the associate editor believes that even with favorable reviews the paper would not be published because it lacks novelty or importance, or if he/she spots a major flaw in experimental design, performance or statistical analysis the manuscript is returned to the authors.

If, on the other hand, the associate editor believes that the paper may merit publication, it is sent to two of our outside **reviewers**. They are asked to provide a frank evaluation of the *scientific validity of the manuscript, insight into its freshness, clinical impact, and timeliness, and an overall opinion* of its worthiness for publication. This is the key step in manuscript evaluation. As editors, we are grateful to all our reviewers for their continued contribution to the rating process. We are careful not to refer to them as "referees," which would suggest that the decision to publish a paper rests entirely with them. It does not. The reviewers provide critiques and advice that the editorial staff uses in making decisions. But we, **ARYA editorial board**, make the decisions. When both outside reviews are returned, the associate editor then assesses the manuscript again, along with the comments of the reviewers. She may seek additional opinions from other reviewers, or may discuss the manuscript at a meeting of the entire editorial staff. At this meeting a decision is made either to reject the paper or to proceed further editorial consideration, including, if appropriate, a formal review of the statistical or experimental methods. In some cases, the editorial staff may recommend additional review by outside reviewers. On completion of this process, the manuscript is usually returned to its authors along with a letter inviting them to revise it and to respond to certain questions. When all the requested information has been received, the manuscript is reconsidered by an associate editor, and it may be discussed again with other members of the editorial staff. We then make our final decision to *accept* or *reject* the paper.

We recognize that the peer-review process is not perfect, but we earnestly believe that it is the best way to select and publish the most important medical research. Peer review is labor-intensive and sometimes *time-consuming*, but without it physicians themselves would have to assess the validity of new medical research and decide when to introduce new treatments into practice.

We do all our efforts to finalize this process in a *3 to 4 months* period for each manuscript.

We understand the importance of a submitted manuscript to its authors. **We invite you to submit your best research to us; we will treat it with respect, and you can follow it on its journey.**

## Type of Articles Considered to be Published in *ARYA Atherosclerosis Journal*

ARYA Atherosclerosis is a bimonthly peer-reviewed scientific Journal providing academically sound, clinically practical information for physicians, medical scientists and health care providers. ARYA Atherosclerosis is published by Isfahan Cardiovascular Research Institute. Journal editors review articles in fields of atherosclerosis, its risk factors and related diseases.

### ORIGINAL RESEARCH

- **Original Articles** are scientific reports of the results of original clinical research. The text is limited to 3000 words (excluding abstracts and references), with a structured abstract, a maximum of 5 tables and figures (total), and up to 30 references.
- **Special Articles** include data and generally focus on areas such as economic policy, ethics, law, or health care delivery. The text is limited to 3000 words, with an abstract, a maximum of 5 tables and figures (total), and up to 30 references.
- **Qualitative Researches** focus to clear underlying reasons, opinions, and motivations. It helps to develop ideas or hypotheses for potential quantitative research. The text is limited to 3500 words, with an abstract, a maximum of 5 tables and figures (total), and up to 30 references.
- **Short Communication Articles** are short scientific entities often dealing with methodological problems or with byproducts of larger research projects and are suitable for the presentation of research that extends previously published research. A short communication is for a concise, but independent report representing a significant contribution to cardiology. Short communication is not intended to publish preliminary results. It should be no more than 1000 words, and could include 2 figures or tables. It should have at least 15 references. Short communications are also sent to peer review.

### CLINICAL CASES

- **Brief Reports** usually describe one to three patients or a single family. The text is limited to 1000 words, a maximum of 5 tables and figures (total), and up to 15 references. It does not include an abstract.
- **Clinical Problem-Solving** manuscripts consider the step-by-step process of clinical decision making. Information about a patient is presented to an expert clinician or clinicians in stages (in the manuscript this

is indicated in **boldface** type) to simulate the way such information emerges in clinical practice.

The clinician responds (regular type) as new information is presented, sharing his or her reasoning with the reader. The text should not exceed 2500 words, and there should be no more than 20 references. The use of clinical illustrative materials, such as x-ray films, is encouraged.

### REVIEW ARTICLES

All review articles undergo the same peer-review and editorial process as original research reports. The text is limited to 7000 words, with unlimited number of figures, tables, and references.

- **Conflicts of Interest:** Because the essence of review articles is selection and interpretation of the literature, the **ARYA Atherosclerosis Journal** expects that the authors of such articles will not have a significant financial association with a company (or its competitor) that makes a product discussed in the article.
- **Clinical Practice** articles are evidence-based reviews of topics relevant to practicing physicians, both primary care providers and specialists. Articles in this series should include the following sections: clinical context, strategies and evidence, areas of uncertainty, guidelines from professional societies, and recommendations from the authors. The text does not include an abstract.
- **Current Concepts** articles focus on clinical topics, including those in specialty areas but of wide interest.
- **Drug Therapy** articles detail the pharmacology and use of specific drugs or classes of drugs, or the various drugs used to treat particular diseases.
- **Mechanisms of Disease** articles discuss the cellular and molecular mechanisms of diseases or categories of diseases.
- **Medical Progress** articles provide scholarly, comprehensive overviews of important clinical subjects, with the principal (but not exclusive) focus on developments during the past five years. Each

article details how the perception of a disease, disease category, diagnostic approach, or therapeutic intervention has evolved in recent years.

## OTHER SUBMISSIONS

- **Editorials** usually provide commentary and analysis concerning an article in the issue of the *Journal* in which they appear. They may include an illustration or table. They are nearly always solicited, although occasionally, unsolicited editorials may be considered. Editorials are limited to 1200 words, with up to 15 references.
- **Perspectives** are also nearly always solicited, but we are willing to consider unsolicited proposals. Perspectives provide background and context for an article in the issue in which they appear. Perspectives are limited to 800 words and usually include an illustration. There are no reference citations.
- **Sounding Board** articles are opinion essays. They are similar to editorials but not tied to a particular article. They often present opinions on health policy issues and are normally unsolicited. The text is limited to 2000 words.
- **Clinical Implications of Basic Research** articles discuss single papers from preclinical journals. The purpose is to explain the findings and comment on their possible clinical applications in fewer than 1000 words. There may be one figure and up to four references. We do not consider unsolicited manuscripts in this category.
- **Images in Clinical Medicine** are classic images of common medical conditions. Visual images are

an important part of much of what we do and learn in medicine. This feature is intended to capture the sense of visual discovery and variety that physicians experience. Images in Clinical Medicine are not intended as a vehicle for case reports.

- **Special Reports** are miscellaneous articles of special interest to the medical community. They are limited to 2700 words.
- **Legal Issues in Medicine** are nearly always solicited, but *Journal* is willing to consider unsolicited manuscripts or proposals for manuscripts.
- **Health Policy Reports** are nearly always solicited, but *Journal* is willing to consider unsolicited manuscripts or proposals for manuscripts.
- **Occasional Notes** are accounts of personal experiences or descriptions of material from outside the usual areas of medical research and analysis.
- **Book Reviews** are generally solicited.
- **Letters to the Editor:** Letters to the Editor are considered for publication (subject to editing and abridgment) provided they do not contain material that has been submitted or published elsewhere. The text, not including references, must not exceed 250 words if it is in reference to a recent *Journal* article, or 500 words in all other cases. A letter must have no more than 5 references and 1 figure or table. It must not be signed by more than three authors. Letters referring to a recent *Journal* article must be received within three weeks of its publication.

The publication fees of ARYA Atherosclerosis Journal

| Type of the article  | Permitted word count* | The payment fee in Iranian Rial (IRR) | The payment fee for each 500 excess words (IRR) |
|----------------------|-----------------------|---------------------------------------|---|
| Letter to the Editor | 500                   | -                                     | -   |
| Clinical Case        | 1000                  | 2,000,000                             | 1000,000  |
| Short Communication  | 1000                  | 2,000,000                             | 1000,000  |
| Original Article     | 3000                  | 3,500,000                             | 1000,000  |
| Qualitative Research | 3500                  | 3,500,000                             | 1000,000  |
| Review Article       | 7000                  | 3,500,000                             | 1000,000  |

\* All the words of the article containing the references; each table is considered as 300 words.

There will be a 50% discount of publication fee if both the first and the corresponding author are affiliated to Isfahan University of Medical Sciences (IUMS).



## **Table of Contents**

---

---

### **Original Article(s)**

**1. Bridging the theory-practice gap in Iranian emergency nursing education**

*Shima Safazadeh, Alireza Irajpour, Nasrollah Alimohammadi, Fariba Haghani* .....105-114

**2. Association between sleep duration and electrocardiographic ischemic changes in middle-aged population: Isfahan Healthy Heart Program**

*Mahdi Khani, Jamshid Najafian, Marzieh Taheri, Afshan Akhavan-Tabib, Shidokht Hosseini* .....115-121

**3. Serum interleukin-18 and extent of coronary artery disease in unstable angina**

*Masoumeh Sadeghi, Maryam Gheraati, Azam Soleimani, Afshin Amirpour, Marzieh Taheri, Safoura Yazdekhashti, Elham Valikhani* .....122-127

**4. Transulnar versus transradial approach for coronary angiography and angioplasty: Considering their complications**

*Farshad Roghani-Dehkordi, Rooholah Mansouri, Alireza Khosravi, Behzad Mahaki, Mehdi Akbarzadeh, Mohammad Kermani-Alghoraishi* .....128-131

**5. Physicians' knowledge, attitudes, and practice for hypertension management: A cross-sectional study in Hormozgan province, Iran**

*Hossein Farshidi, Marzieh Nikparvar, Iran Rostami-Qeshmi, Roghaieh Ezzati-Rad, Afsoon Piroozan, Elham Boushehri* .....132-138

### **Case Report(s)**

**6. Gerbode type defect after trans-septal puncture for ablation of left-sided accessory pathway**

*Masoud Eslami, Reza Mollazadeh, Roya Sattarzadeh-Badkoubeh*.....139-141

**7. Combined association of liver and renal injury by intra-aortic balloon pump malposition**

*Feridoun Sabzi, Aghigheh Heidari, Reza Faraji* .....142-144

### **Letter(s) to Editor**

**8. The importance of screening sleep disorders in outpatient cardiac rehabilitation programs in Iran**

*Habibolah Khazaie, Saeid Komasi*.....145-146



## Bridging the theory-practice gap in Iranian emergency nursing education

Shima Safazadeh<sup>(1)</sup>, Alireza Irajpour<sup>(2)</sup>, Nasrollah Alimohammadi<sup>(3)</sup>, Fariba Haghani<sup>(4)</sup>

### Original Article

#### Abstract

**BACKGROUND:** The theory-practice gap is one of the important challenges of treatment, health, and educational systems. It is affected by different factors like students, teachers, and the clinical environment. This gap has consequences for education, as well as the treatment and health services systems. Thus, it is necessary to find effective strategies to reduce it. Therefore, the present study was conducted with the aim to find strategies to reduce the theory-practice gap in emergency nursing education in the view of stakeholders.

**METHODS:** A qualitative research was conducted, including 18 semi-structured interviews and 3 focus group sessions with the stakeholders in a school of nursing and an educational hospital. Content analysis method was used to analyze the collected data.

**RESULTS:** The strategies to reduce the theory-practice gap in emergency nursing education were divided into 6 primary categories, 2 main categories and 1 theme of action to change. From among the 69 strategies presented to the focus groups, the participants acknowledged 28 strategies as practical and effective. Furthermore, the participants held that it was necessary to have reformative and developmental actions in line with care, supervision, evaluation, and educational processes in order to reduce the gap between theory and practice in emergency nursing education.

**CONCLUSION:** The theory-practice gap is affected by many different factors. Thus, the people involved must pay attention to every influential factor in order to reduce the consequences, and use effective cooperative strategies by taking into consideration the human resources, infrastructures, processes, and the administrative culture in faculty and clinical environments.

**Keywords:** Qualitative Research, Nursing Education, Emergency Department

*Date of submission:* 06 Jan. 2018, *Date of acceptance:* 21 Mar. 2018

#### Introduction

The nursing profession is comprised of the two main domains of theoretical and practical; the first one represents knowledge, and the latter is focused on clinical skills.<sup>1</sup> By the late 20<sup>th</sup> century in the Western world, traditional nursing education at hospitals was transferred to universities which led to a theory-practice gap.<sup>2</sup> The literature showed that there is a clear gap between what is taught in the classroom and what the student nurses experience in the clinical area.<sup>1</sup> The gap has always been a crucial problem in nursing, and as experts believe, it is not presently getting its due attention.<sup>3</sup> The discrepancy between theoretical education and nurses' performance in clinical settings leads to the

uselessness of their knowledge, prevention of scientific progress in theory, the prioritization of traditional common methods, decline in the quality of their work, and even resignation.<sup>4</sup> The reactions of students can be summed up as incompatibility with the clinical environment, anxiety, feeling of incapability, depression, and insecurity due to lack of proficiency,<sup>5</sup> and the newly graduated would experience transition shock.<sup>6</sup>

According to Iranian researchers, the reasons for this gap are dearth of philosophical thinking, mission, and written educational goals in Iran's nursing educational programs, ignorance of students' professional interests, shortage of relevance between theoretical and practical courses,

1- PhD Candidate, Student Research Center, School of Nursing and Midwifery, Isfahan University of Medical Sciences, Isfahan, Iran

2- Associate Professor, Nursing and Midwifery Care Research Centre AND Department of Critical Care Nursing, School of Nursing and Midwifery, Isfahan University of Medical Sciences, Isfahan, Iran

3- Associate Professor, Ulcer Repair Research Center AND Department of Critical Care Nursing, School of Nursing and Midwifery, Isfahan University of Medical Sciences, Isfahan, Iran

4- Associate Professor, Medical Education Research Center AND Department of Medical Education, Isfahan University of Medical Sciences, Isfahan, Iran

Correspondence to: Alireza Irajpour, Email: irajpour@nm.mui.ac.ir

development of a relative and mostly by-the-book knowledge in the students,<sup>7</sup> lack of balance between the proportion of theoretical and practical courses, insufficiency of appropriate facilities in hospitals, rarity of an active engagement of teachers and students of higher education in the clinical settings and their incapability due to lack of necessary theoretical and practical skills, and excess of routine-based approaches.<sup>8</sup> Hence, to find strategies to reduce the gap, Iranian nursing researchers, have focused on the assessment of problems in effective theoretical and practical teaching and training, assessment of different teaching methodologies and their cognitive, motivational, and behavioral outcomes in students' actions, assessment of instructors and clinical environment,<sup>9</sup> and the change in nursing programs and curriculums.<sup>10</sup>

However, the importance of society's expectations of the health system to provide services based on observation and scientific methods,<sup>11</sup> the need for analytical and creative nurses for clinical situations in complex health systems of the 21<sup>st</sup> century,<sup>12</sup> and nurses' passion to bridge the gap and provide high quality care<sup>9</sup> necessitates a local examination of the impacts of the gap and the strategies to reduce them based on the existing facilities. Thus, the researchers decided to use their clinical and educational experiences and conduct a study to find the strategies to reduce the theory-practice gap in emergency nursing education.

### Materials and Methods

This qualitative study was conducted to find strategies to reduce the theory-practice gap in emergency nursing education. The qualitative method relies on the context and allows the researcher to take into consideration the daily lives of a group of people in different circumstances<sup>13</sup> in order to recognize their various behavioral aspects.<sup>14</sup> The multidimensional, unremitting nature of this method helped researchers recognize solutions to reduce the gap between theory and practice in emergency nursing education, which is a multi-factorial concept itself. This study was more than just a solution-seeking practice; it was concerned with how things occur, how people make sense of things, and how issues unfold in the real-world of the faculty and emergency department. By using this method, the research team can reach "deeper data" to find new solutions to decrease the gap, so the qualitative research becomes increasingly valuable.

The participants in this study were theoretical and clinical instructors of a nursing board in the

School of Nursing and Midwifery at Isfahan University of Medical Sciences, Iran, students, nurses, and physicians of the emergency department of an affiliate educational hospital with 100 beds and about 150 nurses, and some of the executive managers in both administrations. The clinical instructors were 2 board members and 4 postgraduate nursing students, 2 of whom had been working in the emergency department.

In addition to willingness to participate, the inclusion criteria for the study were at least a bachelor's degree and 1 year of service in the emergency department in rotational shifts for nurses, attendance in emergency education for nursing students, and at least 1 year of cooperation as an instructor in the emergency department board for clinical instructors. Those who did not want to participate, had stopped working in the emergency department, or had stopped studying nursing (for students) were excluded from the research project.

Isfahan University Ethics Committee has approved this research. Moreover, to adhere to ethical principles in this study, the researchers obtained the oral consent of the head-nurse and nursing instructors upon entry to the department, provided the participants with an introduction and explanation on the aims of the study before the interviews and focus groups, obtained informed consent from the interviewees for audio recordings, assured the interviewees that their participation would have no effects on their jobs, and used codes instead of their names in all related documents of the study. In order to improve the quality of service, the results of the study were also sent to the Committee for Quality Improvement and Certification, the Emergency Services Improvement Committee, and the Teaching Council of the Faculty. The ninth university ethics committee and research council approved the performance of this study.

Data collection started with 18 semi-structured interviews in December 2016 and lasted for 7 months followed by 3 focus groups in 2 months. The most important feature of focus group is the interaction between the members which incites them to produce deep, accountable data.<sup>15</sup> All of the participants were selected through purposive sampling in order to obtain maximum variation and the views of those with expertise in this certain area.

During the interviews, the researchers paid attention to the participants' tone and body language, and wrote the asserted points. If necessary, a shorter interview could be held for further elaborations.



**Table 1.** The selection criteria for strategies and their definitions

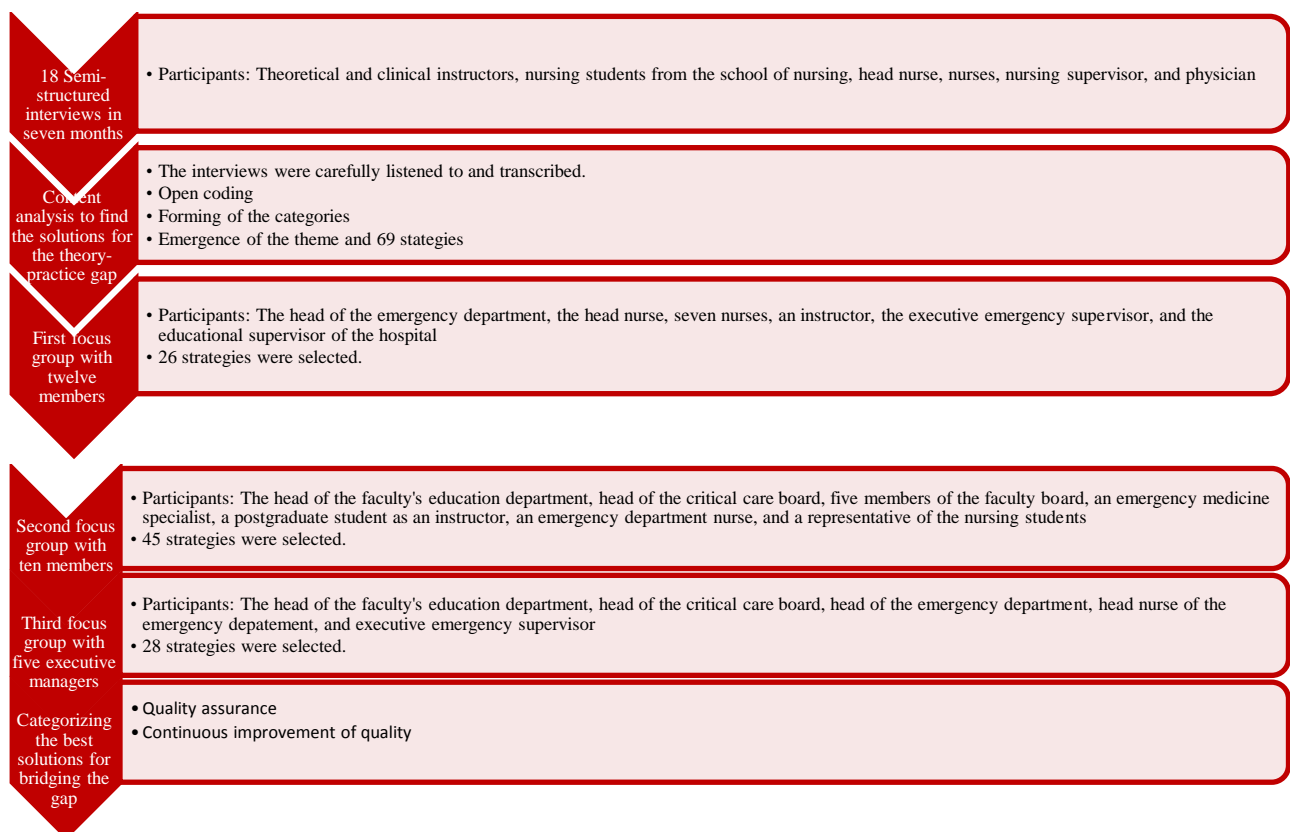
| Criteria                               | Definition  |
|--|---|
| Focus on the problem                   | Its implementation will be the most effective in reducing the theory-practice gap, in emergency nursing education.      |
| Practicality in terms of time and cost | The chosen strategy will be performed in the shortest possible amount of time and with the least cost.                  |
| Measurability                          | There is a practical method for measuring the existing and future situation, for example, questionnaires or checklists. |
| Effectiveness                          | Considering all of the existing aspects and potentials, the strategy is the most effective in reducing the gap.         |

The interviews were continued until data saturation. Some of the questions asked were: “In your opinion, what is your role in the reduction of the theory-practice gap?” and “What do you suggest for its reduction?”

Since the implementation of all the suggested strategies was not possible financially, the researchers (S, I, and A) and the stakeholders decided to hold focus groups to choose practical and effective strategies. By considering the most common selection criteria, nature of the obstacles, and existing strategies, and after the unanimous vote of the participants, the 4 criteria of focus on the problem, practicality in terms of time and cost, measurability, and effectiveness were determined (Table 1). A 9-point Likert scale was used to prioritize the strategies in the two committees of the

faculty and the emergency department; scores of 1-3 show the least importance and scores of 7-9 represent the highest priority for the reduction of the gap. The emergency department committee had 12 members and the faculty committee had 10.

It was possible that the decisions of these two committees would not cover all the conditions in both the faculty and emergency departments; thus, a committee of chief directors including executive managers of the faculty and emergency department was formed. Strategies allowed in the committee of chief directors had the average scores of 7-9 in the 4 criteria. In this committee, 5 experts categorized the strategies of reducing the theory-practice gap into 5 priorities from 1-5. The omitted strategies had a score of less than 3.5. All steps of the study were summarized in a vertical chevron list (Figure 1).

**Figure 1.** 6 steps to find the best solution to decrease the theory-practice gap in emergency nursing education

**Table 2.** A summary of the categories and themes

| Themes            | Main categories                   | Primary categories  |
|-------------------|-----------------------------------|---|
| Action for change | Quality assurance                 | Educational processes reform<br>Care processes reform   |
|                   | Continuous improvement of quality | Supervision and evaluation processes reform<br>Development of educational processes<br>Development of care processes<br>Development of supervision and evaluation processes |

To analyze the data from the interviews, the inductive content analysis method of Elo and Kyngas, which included the 3 steps of open coding, creating categories, and abstraction, was used.<sup>16</sup> The interviews were carefully listened to and transcribed word by word. To get the main idea of the texts, they were read fast, then, read again, this time with extra care to highlight the important sentences. At this point, open coding was executed. Similar codes were put together and formed categories. Finally, 6 primary categories, 2 main categories, and 1 theme were recognized by abstraction.

To improve the validity and integrity of the data, experienced colleagues in qualitative research were asked to control them, the participants were also carefully described, and supplementary comments were heard from experienced educational liaisons, the participants were diversely chosen, the transcribed interviews were shown to the participants, the comments of the quality improvement committee members were heard, and meetings were held with faculty and hospital members as well as chief directors. The researchers tried to achieve validity by careful description of the data collection process and data analysis methodology. Furthermore, the raw written data including the interviews and notes from focus groups were saved and carefully documented for verification in order to improve the validity.

## Results

The results of this study were summarized in identifying the strategies to reduce the gap and choosing practical, effective strategies.

The researchers conducted 18 interviews and 3 focus groups with average time of 63 minutes and 90 minutes, respectively. Analysis of the data from the study showed that the strategies to reduce the theory-practice gap in emergency nursing education could be divided into 6 primary categories, 2 main categories, and 1 theme including action for change. Table 2 provides a summary of the categories and themes.

**Action for change:** In the participants' views, the suggested strategies were a starting point for

change and movement forward in order to reduce the gap; the aforementioned strategies were summed up as quality assurance and continuous improvement of quality. The category of quality assurance included strategies that were then exerted in the faculty and emergency departments, but were not effective enough. Thus, reforming them was essential to quality assurance. The participants' new strategies were also introduced as the continuous improvement of quality programs because, by implementing them, the people involved in the process could actually witness the action to improve.

**Quality assurance:** The participants believed that the existing educational, care, supervision, and evaluation processes for quality assurance needed a reform. Their suggested strategies were using experienced instructors more in the emergency department and clinical examples during theoretical education, scrutinizing the clinical instructors' selection more, providing emergency teachings based on existing clinical processes, supporting the students during care, and holding teaching methodology workshops for instructors. One interviewee said: 'Instructors should be selected correctly. Most of the time, they have no other choice. We have untrained personnel and we have to get them to work. We are short on personnel. I think we should have a better instructor selection program' (P3).

To keep emergency department nurses' clinical skills and knowledge up to date, the greater familiarization of instructors with care processes, greater supervision on the performance of departments' nurses, bonuses for educational personnel, greater attention to effective refresher courses for nurses, use of intra-department education to empower the nurses, and greater scrutiny in the selection of emergency department nurses were suggested for care processes. On nurses' education, one participant commented: 'They hold a class and explain everything in a rush. People do not learn. To work with the ventilator, I have to explain some tips repeatedly, so that they learn gradually' (P1).

For quality assurance in supervision and evaluation processes, participants suggested more accurate use of the logbook, students' self-evaluation at the beginning of the training course, the instructor's higher supervision to sustain the educational criteria in the hospital as well as acknowledgment of the problems, and more use of nurses' supervisory role over the students. One participant's view about the logbook was that 'It should not be just for ticking items. The instructor has to have enough time to complete the logbook as the student does a procedure' (P4).

#### *Continuous improvement of quality:*

Strategies for continuous improvement of quality referred to developmental strategies that had not been implemented in the hospital and faculty, and in the participants' views must be used in educational, care, supervision, and evaluation processes. Some suggested strategies for educational processes development were to hold nursing students' theoretical classes in the hospital, students' presence in the Morbidity and Mortality Review Committee, to assess students' needs before the training course to work more on the weaknesses, to have plans to teach how to work with the important care equipment on the first day, to hold a one-day workshop before the training course or to give students the emergency cares and skills' pamphlets, and to use clinical teachers as members of hospitals' committees. A participant commented: 'Students should be in the Morbidity and Mortality Review Committee. This way they understand the gravity of the situation. They will know, then, how important the care is' (P5).

New strategies for care processes were to make hospitalization information directly accessible to students and teachers, to allocate a place for educational purposes in the emergency department, and to enact a process through which the emergency nursing board would be informed of the

changes in the department, including the rules, guidelines, and even equipment. A participant said: 'There must be a place with the monitor and defibrillator machine, where students can work with them first hand, but unfortunately the current situation will not allow that. The problem is the lack of a class in the emergency department' (P4).

The participants also believed that in order to develop the supervision and evaluation processes, the faculty was required to take theory and practice exams for students to begin their courses, and use postgraduate students to assess students' problems and oversee the educational issues in the hospital. One of the participants remarked: 'There must be an entrance exam for the training course, and their entry grade must be high, so that anybody with any grade cannot attend the course' (P7).

#### *Stage Two: Selection of Effective and Practical Strategies:*

In the first stage, content analysis revealed 69 strategies. After 3 focus groups for 7 hours and based on the 4 criteria, the number of strategies were decreased. In doing so, 45 strategies from the faculty committee and 26 strategies from the emergency department committee received scores above 7. These 38 strategies were successfully approved by participants in the two committees; they were then presented to the committee of chief directors and only 28 of them were recognized as practical and effective. The selected strategies are shown in tables 3, 4, and 5.

### Discussion

This study was conducted to recognize the effective strategies to reduce the theory-practice gap in emergency nursing education. The participants in this study held that it was necessary to have reformative and developmental actions in line with care, supervision, evaluation, and educational processes in order to bridge the theory-practice gap in emergency nursing education.

**Table 3.** Some strategies in educational processes for quality assurance

| Strategies  | Primary categories | Main categories |
|---|--------------------|-----------------|
| Reviewing of theoretical content by students and holding a workshop before they go to the emergency department                |                    |                 |
| Providing an introductory pamphlet on the emergency department  |                    |                 |
| Providing clinical instructors and emergency nurses with updates on new equipment   | Educational        | Quality         |
| Holding regular, seasonal meetings between the emergency care board, the head nurse, and the head of the emergency department | processes          | assurance       |
| Using clinical experience and examples in teaching of theory  |                    |                 |
| Reforming the emergency training lesson plan  |                    |                 |

**Table 4.** Some strategies in supervision and evaluation processes for quality assurance

| Strategies  | Primary categories                   | Main categories   |
|---|--------------------------------------|-------------------|
| Regular, accurate supervision of the faculty on trainings and students' presence  | Supervision and evaluation processes | Quality assurance |
| Higher supervision of teachers on students' performance through keen observations and feedbacks, in case of teachers' absence |                                      |                   |
| Preceptors must oversee students' performance for more accordance with lesson plans   |                                      |                   |
| Changes must be made in the structure of the logbook.   |                                      |                   |

The strategies suggested by the participants were a need-based reformation and improvement of educational processes, provision of necessary human resources and equipment, effective use of encouraging tools, and reformation of the presentation of theoretical and clinical education and selection of an appropriate time for it. As in the study by Beverley, the participants in this study believed the use of real-life events and scenarios would help students have a deeper understanding of patients' care and complex needs.<sup>17</sup> They believed that clinical settings were the best place to learn; however, the experience opportunities were not always available for every skill.<sup>17</sup> The participants in this study believed that some of the theory in emergencies must be taught by clinical teachers. There was even a talk about members of the board being 'transferable' between the faculty and the emergency department. This has also been asserted by Benner et al., who believe that, logically, learning in the class and clinical settings would merge effectively when the theoretical teachers also take the clinical courses, but due to the extreme shortage of nursing teachers, this does not often happen.<sup>18</sup> Some other researchers hold that theoretical teachers should maintain their clinical abilities through constant teaching in clinical settings or laboratories, having temporary responsibilities, keeping contact with the clinical settings, or participating in the clinical experiences. The clinical teachers should also have a copy of the contents and curriculum of the theoretical lessons, and they

can be invited to attend theoretical classes.<sup>19</sup> To reduce the gap, it has always been asserted necessary to have open channels between theoretical and clinical instructors,<sup>1</sup> to engage teachers in clinical teaching, and to give joint appointments to theoretical teachers in clinical settings.<sup>20</sup> The use of experienced teachers or educating the existing ones was another suggested strategy; due to shortage of human resources, the committee of chief directors decided to hold classes for existing teachers accompanied by experienced ones to improve their competence. In some studies, the clinical coordinators introduced new clinical teachers to policies, procedures, evaluation methods, and lesson plans of theoretical and clinical courses; they also held joint meetings at the beginning and end of each semester.<sup>19</sup> The empowerment of efficient human resources in educating students was an effective and applicable strategy.

Reform in the emergency course plan and even nursing educational program with more focus on new educational approaches and the hidden educational program was among the suggested strategies by the participants. The emergency nursing program in Iran is not decentralized, so making changes in it is administratively impossible, but participants emphasized the need for reforms in the training course plan and its accordance with theoretical courses, as well as a daily lesson plan to improve students' and preceptors' awareness of the activities and goals of the training. This was another effective strategy mentioned by the participants.

**Table 5.** Some strategies in educational, supervision, and evaluation processes for continuous quality improvement

| Strategies   | Primary categories    | Main categories                      |
|--|-----------------------|--------------------------------------|
| Assessment of needs by teachers on the first day of training           | Educational processes | Continuous quality improvement       |
| Use of daily lesson plans for emergency trainings                      |                       |                                      |
| New instructors accompanied by experienced ones for the few first days |                       | Supervision and evaluation processes |
| Annual surveys on activities in the logbook from students' views       |                       |                                      |
| Preceptors' right to complete and sign the logbook                     |                       |                                      |



In some researchers' views, students will be less stressed and more efficient in service, if the course plan designing team took into account the potential influence of the hidden lesson plan and introduced students to the challenges of decision making in nursing. In addition, the faculty must lead its current educational and learning models towards self-guidance approaches based on problem-solving.<sup>21</sup> Others suggested a revision in lesson plans, presentation of clinic points in teaching theory, and a quest for new course plans.<sup>22</sup> Students, according to the participants in this study, can improve their clinical qualifications through getting feedbacks from clinical teachers and preceptors. As a matter of fact, students learn in clinical situations, when they understand what is right or wrong; this would be possible through clinical nurses' feedbacks to students.<sup>23</sup> A good relationship with the preceptor, to get feedback and learn without deadline pressure, to talk about the expectations, experiences, and goals of students, and preceptors' responsibility for planning, guidance, support, and innovation of learning activities are all deemed important in the works of some researchers on learning processes.<sup>24</sup> At the time of this study, there were 6 preceptors in the emergency department, actively participating in students' education. Considering the high number of training courses, 6 preceptors were not enough. Students, in some cases during the afternoon and night shifts, worked alongside nurses who were not aware of the responsibilities and duties of a preceptor. Their presence, however, was often facilitating, according to the students.

Some researchers have suggested the use of the clinical teaching associate model in teaching students for its improvement in students' clinical outcomes and nurses' increased sense of satisfaction.<sup>25</sup> One of the themes in the study by Beverley was the role of nurses as preceptors which was, according to the students, facilitating in clinical settings, since they could share their experiences.<sup>17</sup> On the contrary, students in some cases received less support and sympathy from their own preceptor.<sup>26</sup> In other studies, students had considered the non-restrictive atmosphere and feedbacks by encouraging preceptors as a positive experience.<sup>15</sup> The allocation of resources and cooperation between the faculty and the hospital was, one of the suggestions to reduce the theory-practice gap. The nurses' capabilities were used to teach and improve students' skills; by creating a unique clinical learning environment and supporting

the students, their competence and confidence was enhanced.<sup>6,27</sup> When students, as learners, are treated like members of the team and valuable people, they feel empowered in the clinical settings; this will affect their learning and their consistency in following the educational programs.<sup>28</sup> Ajani and Moez have categorized the strategies to reduce the gap into 3 main sets; reconstruction of resources, redesigning the education, and a change in rules. For reconstruction of resources, it has been suggested to clarify the responsibilities of students, nurses, and nurse assistants. This means that students should not be considered the providers of nursing services, because they have particular educational goals to achieve in the clinical settings. The redesigning of the education is based on the change in the concept of 'everybody can be a teacher' and asserts the necessity of students' learning from elite, qualified teachers. Replacement of rules basically refers to the temporary use of university professors in the hospital.<sup>21</sup>

Most of the selected strategies, as can be seen in table 3, focused on educational processes, in doing so, the participants tried to reform and improve the activities related to the theoretical sector in order to reduce the gap. In addition to educational issues, there were yet other factors involved in the formation of the gap.

The participants' suggested strategies to reform and improve the care processes, emphasized on knowledge-based care, replacement of routine-based care with standards, and the use of qualified nurses to teach and provide care in the emergency department. The formulation of guidelines and executional procedures was one of the strategies to reduce the gap. One of the themes from the study by Bvumbwe was observation-based nursing performance. Furthermore, the academic-clinical partnership method provided teachers and nurses in the clinical settings with opportunities to research, leading to the promotion of a learning culture, and this results in the increased use of observations in the clinical settings.<sup>27</sup> To increase the effectiveness of nurses' education, the participants also emphasized the education within the department, instead of the usual group classes. Ansari *et al.* believe that despite its importance and obligatory nature, education has a small impact on nurses' performance. Thus, it is necessary to focus on other managerial and pre-professional factors.<sup>29</sup> The nursing teachers can also share their experimental knowledge to ensure that nurses have up-to-date, verified, and valid knowledge.<sup>3</sup> The most reported

method for learning about preceptorship, in one study, was training and workshop. Increased educational experiences of participants led to increased knowledge about the position of a preceptor.<sup>30</sup> Finally, focus on constant education of nurses, was among other suggested strategies by some researchers. These programs can help nurses keep up with the existing changes in the health care system.<sup>21</sup>

The preceptors who participated in this study had experienced problems such as high number of working shifts, shortage of time to teach the students due to emergency department pressures, and the feeling of disrespect from others. Their love for teaching and their hope for promotion, however, helped them tolerate those problems with more ease. Parallel to this issue, some researchers believe that, due to their multiple roles, preceptors must be given more attention, so that they can provide an appropriate environment for the students.<sup>15</sup> In other studies, the joint partnership of the hospital and the faculty created an opportunity for the people involved in the process to show their capacities. Clinical preceptors' capacity for research is improved when they work with students; this also leads to the professional development of nurses.<sup>27</sup> To facilitate the participation of students in care services, participants believed that there should be better communication between students and other service providers like nurses and supervisors. The suggested strategies for this were meetings with emergency nurses to understand how to deal with students, assistance in teaching, and clarification of students' limits of activity. In other studies, one of the suggested strategies was the improvement of respectful communication between people involved in the process in both the faculty and clinical environment. This way, the attitude of nurses towards students would improve, and common values and interests would form a mutual respect and trust. This kind of communication is possible through the concerns of executive managers and decision makers of parties, joint meetings, development of commitment, sharing knowledge, and respect for all the members.<sup>27</sup> Students, in other studies, wanted to have more support<sup>1</sup> and emphasized that presence in the clinic as an active member helped them trust their knowledge and skills and feel more like nurses.<sup>17</sup> In the meantime, the heavy work load of the staff and supervision of different preceptors brought about a stressful experience for students.<sup>24</sup>

Although the suggested strategies of this matter were given high scores in the hospital committee,

they were not approved as the final effective strategies by the committees of the faculty and chief directors. This shows that nurses have always tried to find an opportunity to express their most crucial issues. A realistic attitude towards the nursing condition in Iran, though its problems in some cases are universal, would reveal that at the present situation and without taking into consideration the necessary infra-structures, implementation of some strategies is impossible. For example, it is not currently possible to increase the number of emergency nurses according to domestic standards, to set particular criteria for the hiring of emergency nurses by chief directors of nursing, to formulate and implement treatment and care guidelines in the emergency department, and to include bonuses and benefits for nurses who teach, like fewer shifts or patients to attend in a working shift. Conclusively, the disallowance of all care processes strategies is evidence enough that the theory-practice gap in the clinical settings is still existent; thus, it requires nurses' and chief directors' attention.

The participants' suggested strategies to reform and improve supervision and evaluation processes, and emphasized faculty's supervision on the quality of training courses and regular attendance of students, presence of an educational colleague in case of teachers' absence, and modification of the logbook. Alavi and Irajpour suggested the expansion of evaluation approaches to all clinical qualification dimensions, which would be the result of an effective interaction between clinical teachers, students, physical and sociocultural environment of education, and clinical evaluation.<sup>31</sup> Some researchers believe that supervision on students must be based on their personal performances of each skill, and the feedbacks must be combined with inquisitive questions on students' logic about skills and activities they present in different care situations for a patient.<sup>32</sup> Some of the overruled strategies for this section were written self-evaluations by students, formulation of a program to have supervision on students in evening and night shifts, an entrance exam of theory and practical items for training courses, higher teachers' supervision for completion of the logbook, and the use of 360 degrees method to evaluate students' performance in the emergency training course. The study also showed that supervision and evaluation were challenging for the management and influential on the theory-practice gap; it was still problematic to implement cooperative strategies to reduce the gap.

The present study has relied only on qualitative methodology of data collection and is, therefore, restrictive. A more quantitative methodology of data collection should be undertaken in the future to provide a wider perspective on the present study. The sample for the present study comprised of 18 interviewees and 22 participants in focus groups that is only a very small proportion of all the stakeholders. Consequently, the researchers suggested sharing the strategies with more stakeholders to create an environment conducive to effective stakeholder interaction and more practical solutions.

### Conclusion

The results of this study showed that to bridge the theory-practice gap in emergency nursing education, it was important to consider all the influential factors such as students, human resources of the faculty and the hospital, the facilities and equipment, culture, and the administrative processes. Thus, practical, effective strategies were compatible with processes, equipment, existing hardware and software capabilities, and even the governing administrative culture in the hospital and the faculty environment, and were also accepted by the people involved in the process. In conclusion, the use of cooperative methods and a concern for the existing conditions and infrastructure is necessary to recognize, implement, and evaluate such strategies.

### Acknowledgments

The authors wish to thank all the teachers, nurses, doctors, and students who participated in this study. This was part of a nursing doctorate thesis sponsored by Isfahan University of Medical Sciences, code 394679.

### Conflict of Interests

Authors have no conflict of interests.

### References

1. Saifan AR, Safieh HA, Milbes R, Shibly R. Suggestions to close the gap in nursing education: Nursing students' perspectives. *International Journal of Nursing Didactics* 2015; 5: 5-12.
2. Ousey K, Gallagher P. The theory-practice relationship in nursing: A debate. *Nurse Educ Pract* 2007; 7(4): 199-205.
3. Hussein MH, Osuji J. Bridging the theory-practice dichotomy in nursing: The role of nurse educators. *J Nurs Educ Pract* 2017; 7(3): 20-5.
4. Heydari A, Soudmand P, Hajiabadi F, Armat MR, Rad M. The causes and solutions of the theory and practice gap from nursing education view point: A review article. *J Med Educ Dev* 2014; 7(14): 72-85. [In Persian].
5. Khodaei A, Mansourain M, Ganjei S, Asgari H. Strategies for decreasing gap between theory & clinical performance from the viewpoints of nursing students in Tabriz University of Medical Sciences. *Research in Medical Education* 2016; 8(2): 49-59. [In Persian].
6. Kathryn A. *The Clinical Scholar Model: A strategy to bridge the theory-practice gap* [PhD Thesis]. Boca Raton, FL: Florida Atlantic University; 2013.
7. Adib Hajbaghery M. Comparison of philosophy, goals and curriculum of graduate level of nursing education in Iran and other countries. *Iran J Med Educ* 2018; 2: 8. [In Persian].
8. Cheraghi MA, Salsali M, Safari M. Ambiguity in knowledge transfer: The role of theory-practice gap. *Iran J Nurs Midwifery Res* 2010; 15(4): 155-66.
9. Zeighami R, Saadatju A, Khorasani P, Afshani S, Ganjehe S, Jafarian H, et al. Providing national draft on bridging education service gap in Iran. *Journal of Nursing Education* 2014; 3(2): 68-75. [In Persian].
10. Nikfarid L, Rasouli M. Caring curriculum: A new paradigm in nursing education. *Iran J Nurs* 2011; 24(70): 61-71. [In Persian].
11. Barker AM. *Advanced practice nursing: Essential knowledge for the profession*. Burlington, MA: Jones & Bartlett Publishers; 2009.
12. Moss C, Grealish L, Lake S. Valuing the gap: A dialectic between theory and practice in graduate nursing education from a constructive educational approach. *Nurse Educ Today* 2010; 30(4): 327-32.
13. Yin RK. *Qualitative research from start to finish*. New York, NY: Guilford Publications; 2015.
14. Lichtman M. *Qualitative research in education: A user's guide: A user's guide*. Thousand Oaks, CA: SAGE; 2012.
15. Jonsen E, Melender HL, Hilli Y. Finnish and Swedish nursing students' experiences of their first clinical practice placement--a qualitative study. *Nurse Educ Today* 2013; 33(3): 297-302.
16. Elo S, Kyngas H. The qualitative content analysis process. *J Adv Nurs* 2008; 62(1): 107-15.
17. Beverley Y. *Learning nursing: Gaining an insight into what helps students to make sense of nursing knowledge and practice* [PhD Thesis]. Glasgow, UK: University of Strathclyde; 2015.
18. Benner P, Sutphen M, Leonard V, Day L. *Educating nurses: A call for radical transformation*. Hoboken, NJ: John Wiley & Sons; 2009.
19. Flood LS, Robinia K. Bridging the gap: Strategies to integrate classroom and clinical learning. *Nurse Educ Pract* 2014; 14(4): 329-32.
20. Agbedia C, Okoronkwo I, Onokayeigho E, Agbo M. Nurses' perspective of the research-practice gap in nursing. *Open J Nurs* 2014; 4(2): 95-100.

21. Ajani K, Moez S. Gap between knowledge and practice in nursing. *Procedia Soc Behav Sci* 2011; 15: 3927-31.
22. Dadgaran I, Parvizy S, Peyrovi H. A Global issue in nursing students clinical learning: The Theory-Practice Gap. *Procedia Soc Behav Sci* 2012; 47: 1713-8.
23. Kaphagawani NC, Useh U. Analysis of nursing students learning experiences in clinical practice: Literature review. *Studies on Ethno-Medicine* 2013; 7(3): 181-5.
24. Jansson I, Ene KW. Nursing students' evaluation of quality indicators during learning in clinical practice. *Nurse Educ Pract* 2016; 20: 17-22.
25. Rahnavard Z, Nodeh ZH, Hosseini L. Effectiveness of clinical teaching associate model in nursing education: Results from a developing country. *Contemp Nurse* 2013; 45(2): 174-81.
26. Darriel OP, Waelli M, Ricketts TC. France's transition to academic nursing: The theory-practice gap. *J Nurs Educ Pract* 2014; 4(10): 88-100.
27. Bvumbwe T. Enhancing nursing education via academic-clinical partnership: An integrative review. *Int J Nurs Sci* 2016; 3(3): 314-22.
28. Bradbury-Jones C, Sambrook S, Irvine F. Empowerment and being valued: A phenomenological study of nursing students' experiences of clinical practice. *Nurse Educ Today* 2011; 31(4): 368-72.
29. Ansari A, Masoodi Alavi N, Adib Hajbagheri M, Afazel MR. The gap between knowledge and practice in standard endo-tracheal suctioning of ICU nurses, Shahid Beheshti Hospital. *Iran J Crit Care Nurs* 2012; 5(2): 71-6. [In Persian].
30. Teferra AA, Mengistu D. Knowledge and attitude towards nursing clinical preceptorship among Ethiopian nurse educators: An institution-based cross-sectional study. *International Journal of Africa Nursing Sciences* 2017; 7: 82-8.
31. Alavi M, Irajpour A. Optimum characteristics of nursing students' clinical evaluation: Clinical nursing teachers' viewpoints in Isfahan University of Medical Sciences. *Iran J Med Educ* 2014; 13(10): 796-808.
32. Ewertsson M, Allvin R, Holmstrom IK, Blomberg K. Walking the bridge: Nursing students' learning in clinical skill laboratories. *Nurse Educ Pract* 2015; 15(4): 277-83.

**How to cite this article:** Safazadeh S, Irajpour A, Alimohammadi N, Haghani F. **Bridging the theory-practice gap in Iranian emergency nursing education.** *ARYA Atheroscler* 2018; 14(3): 105-14.



## Association between sleep duration and electrocardiographic ischemic changes in middle-aged population: Isfahan Healthy Heart Program

Mehdi Khani<sup>(1)</sup>, Jamshid Najafian<sup>(2)</sup>, Marzieh Taheri<sup>(3)</sup>, Afshan Akhavan-Tabib<sup>(4)</sup>, Shidokht Hosseini<sup>(3)</sup>

### Original Article

#### Abstract

**BACKGROUND:** Recent studies examining the association between sleep duration and cardiovascular disease (CVD) showed inconsistent results. The aim of our study was to evaluate the association between self-reported night sleep duration and ischemic changes in electrocardiography (ECG).

**METHODS:** We conducted this cross-sectional study on 3513 participants from Iranian middle-aged population as a part of Isfahan Healthy Heart Program (IHHP), Isfahan, Iran. Sleep duration was obtained by questioning participants. The frequency of electrocardiographic ischemic changes was calculated using ECG Minnesota coding system.

**RESULTS:** Short sleep duration was associated with increased frequency of electrocardiographic ischemic changes. In a fully adjusted multiple logistic regression analysis, the odds ratio (OR) for short sleep duration less than 5 hours per night was 1.501 [95% confidence interval (CI) for OR: 1.085-2.076] compared to 8 hours of sleep. After stratifying the study population into sex groups, the association remained significant only in women. The OR for short sleep less than 5 hours per night was 1.565 (95% CI for OR: 1.052-2.329) and 1.455 (95% CI for OR: 0.833-2.539) in women and men, respectively. There was no association between long sleep duration and electrocardiographic ischemic changes in men and women.

**CONCLUSION:** We concluded that there is a positive association between short sleep duration and frequency of electrocardiographic ischemic changes in middle-aged women. This association suggests that short sleep duration may increase the risk of ischemic heart disease (IHD) in women, and this need to be evaluated in further studies.

**Keywords:** Myocardial Ischemia, Electrocardiography, Sleep Deprivation

*Date of submission:* 30 July 2017, *Date of acceptance:* 25 Feb. 2018

#### Introduction

Ischemic heart disease (IHD) is the leading cause of death worldwide.<sup>1</sup> Recent studies suggest that sleep duration is related to cardiovascular mortality and morbidity.<sup>2</sup>

There are also many studies showing the association between sleep duration and cardiovascular risk factors such as diabetes, hypertension, obesity, and metabolic syndrome.<sup>3-6</sup> Prospective and cross-sectional studies which examined the association of sleep duration with cardiovascular disease (CVD) showed inconsistent results.

Some studies reported only short sleep duration, and some others reported long sleep duration as a risk factor for CVD.<sup>7-10</sup> Some other studies suggest a U-shaped association between short and long sleep duration with CVD;<sup>11,12</sup> moreover, there are some studies that claim no direct association between sleep duration and CVD, or suggest that the effect may be caused by other covariates.<sup>13-15</sup>

As we know, there is no study evaluating the relation between sleep duration and IHD in Iranian population. In this study we aimed to evaluate the association between habitual nocturnal sleep

1- MD Researcher, Interventional Cardiology Research Center, Cardiovascular Research Institute, Isfahan University of Medical Sciences, Isfahan, Iran

2- Associate Professor, Hypertension Research Center, Cardiovascular Research Institute, Isfahan University of Medical Sciences, Isfahan, Iran

3- Researcher, Isfahan Cardiovascular Research Center, Cardiovascular Research Institute, Isfahan University of Medical Sciences, Isfahan, Iran

4- MD Researcher, Cardiac Rehabilitation Research Center, Cardiovascular Research Institute, Isfahan University of Medical Sciences, Isfahan, Iran

Correspondence to: Jamshid Najafian, Email: [jamshid\\_najafian@yahoo.com](mailto:jamshid_najafian@yahoo.com)

duration and frequency of ischemic changes in electrocardiography (ECG) in a middle-aged Iranian general population.

### Materials and Methods

This cross sectional study was conducted as a part of Isfahan Healthy Heart Program (IHHP), Isfahan, Iran. Details of IHHP are published elsewhere.<sup>16</sup>

Individuals from urban and rural communities of three provincial cities of Isfahan, Najafabad, and Arak chosen by multistage cluster sampling were included. Inclusion criteria of our study were 35 to 60 years of age, Iranian nationality, history of residing in the above cities for at least 10 years, and absence of hemorrhagic disease and mental retardation. The study participants consisted of 3513 individuals based on inclusion and exclusion criteria.

Sociodemographic data were recorded by trained interviewers in door-to-door visits. Participants were asked to go to IHHP clinical centers and after signing informed written consent, medical history was taken and physical examinations were done for each individual. Fasting blood sugar (FBS) and lipid profile were measured by standard laboratory tests.

Twelve-lead ECG was taken by trained staff using Hewlett-Packard ECG machine from all participants. All the electrocardiograms were studied by the same cardiologists, and their corresponding codes were calculated. Ischemic changes were identified according to Minnesota coding system. We included four levels of ischemia in our outcomes: definite myocardial infarction (MI) which is defined by Minnesota codes 1.1, 1.2.1 and 1.2.2; possible MI represented by codes 1.2.7, 1.2.8, 1.3; definite ischemia equates codes 4.1 and 5.1; and possible ischemia which is diagnosed by codes 4.2, 5.2 and 5.3.<sup>17</sup>

Sleep duration time was obtained by the question "How many hours of sleep do you get per night usually?" Responses were categorized into 6 groups: less than 5 hours, 5 hours, 6 hours, 7 hours, 8 hours, and 9 hours and more.

Other covariates included in the analysis were: age by years, sex (men and women), body mass index (BMI) which was calculated as weight/height<sup>2</sup> (kg/m<sup>2</sup>) and categorized into  $30 \leq$  and  $< 30$  groups, physical activity measured by validated Baecke questionnaire of habitual physical activity and stratified into two groups of active and inactive, smoking status (never, past smoker, current smoker),<sup>16,18</sup> metabolic syndrome components defined as following: 1- central obesity as the waist circumference  $> 102$  cm in men and  $>88$  cm in

women; 2- fasting plasma triglycerides  $\geq 150$ ; 3- low high-density lipoprotein (HDL) cholesterol with fasting HDL cholesterol  $< 40$  mg/dl in men and  $< 50$  mg/dl in women; 4- hypertension with systolic blood pressure  $\geq 130$  mmHg and/or diastolic blood pressure  $\geq 85$  mmHg and/or antihypertensive agents; 5- hyperglycemia with fasting plasma glucose  $\geq 100$  mg/dl and/or hypoglycemic medications.<sup>19</sup>

The variables were reported as number (percentage) or mean [ $\pm$  standard deviation (SD)] as appropriate. We compared the characteristics of participants in different sleep duration groups, and also in two groups of individuals with and without ischemic changes in ECG by using chi-square test for categorical variables and analysis of variance (ANOVA) for continuous variables.

We used multiple logistic regression analysis to assess the impact of sleep duration on frequency of ischemic changes in ECG "defined by Minnesota codes". Odds ratios (OR) with 95% confidence interval (CI) were calculated for sleep groups using 8 hours of night sleep as the reference category, and 3 models were used for analysis: in the first model, we calculated OR for each group of sleep without any adjustment; in the second model, results were adjusted for age and sex; and in the third model results were additionally adjusted for BMI, smoking status, physical activity (active or Inactive), and metabolic syndrome components (5 groups having 1, 2, 3, 4 or 5 of the components).<sup>19</sup> In a second analysis, we stratified the study population into sex groups and calculated the OR for men and women separately. We chose 8 hours as the reference group because it had the lowest frequency of ischemic changes between sleep groups in our study, and also it is recommended as the optimal sleep duration time for middle-aged adults.<sup>20</sup> Statistical analysis was performed using SPSS software (version 15, SPSS Inc., Chicago, IL, USA). The study was approved by Ethics Committee of Isfahan Cardiovascular Research Center.

### Results

In total, 3513 individuals aged 35 to 60 years participated in the study. Mean age of study population was  $44.8 \pm 6.8$  years, 52.6 percent were women, and significant differences in age and sex were seen between sleep groups. Frequency of electrocardiographic ischemic changes according to ECG Minnesota coding was 21.4 %, and average sleep duration was  $6.85 \pm 1.48$  hours. Characteristics of each sleep group are showed in table 1.

**Table 1.** Study population characteristics by sleep duration.

| Sleep duration (hour per night)           | < 5 hours  | 5 hours    | 6 hours    | 7 hours    | 8 hours    | 9 hours<   | P*      |
|---|------------|------------|------------|------------|------------|------------|---------|
| Characteristic                            |            |            |            |            |            |            |         |
| Number of participants                    | 249        | 319        | 763        | 807        | 1133       | 234        |         |
| ECG ischemic changes                      | 72 (28.9)  | 65 (20.3)  | 158 (20.7) | 174 (21.6) | 229 (20.2) | 53 (22.6)  | 0.035   |
| Women                                     | 148 (59.4) | 149 (46.7) | 394 (51.6) | 439 (54.4) | 583 (51.5) | 128 (54.7) | 0.043   |
| BMI ≥ 30                                  | 56 (23.6)  | 78 (26.2)  | 202 (27.6) | 190 (24.1) | 264 (23.7) | 58 (25.1)  | 0.491   |
| BMI < 30                                  | 181 (76.4) | 220 (73.8) | 530 (72.4) | 599 (75.9) | 849 (76.3) | 173 (74.9) |         |
| Current smoking                           | 36 (14.5)  | 59 (18.5)  | 98 (12.9)  | 107 (13.3) | 153 (13.5) | 44 (18.8)  | 0.051   |
| Physical activity (inactive)              | 143 (57.4) | 197 (61.8) | 447 (58.6) | 468 (58.0) | 643 (56.8) | 131 (56.0) | 0.695   |
| Age (year)                                | 47.4 ± 6.7 | 46.0 ± 6.8 | 45.1 ± 6.8 | 44.2 ± 6.8 | 44.3 ± 6.8 | 43.9 ± 7.0 | < 0.001 |
| BMI (kg/m <sup>2</sup> )                  | 27.3 ± 4.3 | 27.3 ± 4.4 | 27.5 ± 4.5 | 27.2 ± 4.4 | 27.0 ± 4.4 | 26.8 ± 4.6 | 0.151   |
| Metabolic syndrome (number of components) |            |            |            |            |            |            |         |
| 0   | 26 (10.6)  | 43 (13.7)  | 113 (15.0) | 137 (17.1) | 193 (17.2) | 34 (14.5)  | 0.058   |
| 1   | 72 (29.4)  | 93 (29.5)  | 188 (24.9) | 190 (23.8) | 266 (23.6) | 55 (23.5)  |         |
| 2   | 63 (25.7)  | 84 (26.7)  | 240 (31.8) | 259 (32.4) | 347 (30.8) | 73 (31.2)  |         |
| 3   | 52 (21.2)  | 57 (18.1)  | 149 (19.8) | 142 (17.8) | 226 (20.1) | 50 (21.4)  |         |
| 4   | 28 (11.4)  | 35 (11.1)  | 50 (6.6)   | 64 (8.0)   | 72 (7.3)   | 17 (7.3)   |         |
| 5   | 4 (1.6)    | 3 (1.0)    | 14 (1.9)   | 7 (0.9)    | 11 (1.0)   | 5 (2.1)    |         |

Data are given as n (%) or mean ± standard deviation (SD)

\* P-value calculated using chi-square test or ANOVA as appropriate.

ECG: Electrocardiography; BMI: Body mass index

Table 2 presents the characteristics of the study participants in two groups of with and without ischemic changes in ECG. The group with ischemic changes in ECG were more likely to be older, women, inactive, to sleep less, to have higher BMI and higher prevalence of metabolic syndrome components, but were less likely to smoke.

Compared to those who sleep 8 hours per night, individuals with short sleep duration (less than 5 hours) had increases in the frequency of ischemic

changes (Table 3). In model 1 for those who sleep less than 5 hours OR was 1.606 (95% CI: 1.178-2.189); in model 2 adjusted for age and sex, OR was 1.410 (95% CI: 1.025-1.940). After adjustment for additional covariates in model 3, the OR was 1.501 (95% CI: 1.085-2.076). In subgroup analysis the association remained significant in women but not in men, the OR for < 5 hours of sleep in women and men were 1.565 (95% CI: 1.052-2.329) and 1.455 (95% CI: 0.833-2.539), respectively. (Table 4).

**Table 2.** Comparing variables in groups with and without ischemic changes in electrocardiography (ECG)

| Variable                          | With ischemic changes in ECG | Without ischemic changes in ECG | P*      |
|-----------------------------------|------------------------------|---------------------------------|---------|
| Number of participants            | 752                          | 2761                            |         |
| Sleep duration (hour)             | 6.74 ± 1.49                  | 6.87 ± 1.47                     | 0.046   |
| Age (year)                        | 45.80 ± 6.80                 | 44.50 ± 6.80                    | < 0.001 |
| Women (%)                         | 66.2                         | 47.0                            | < 0.001 |
| BMI ≥ 30 (%)                      | 26.5                         | 22.1                            | 0.002   |
| Current smoking (%)               | 9.9                          | 13.8                            | 0.001   |
| Physical activity (inactive) (%)  | 63.0                         | 58.3                            | 0.004   |
| Metabolic syndrome components (%) |                              |                                 |         |
| 0                                 | 10.7                         | 15.3                            | 0.001   |
| 1                                 | 21.1                         | 24.5                            |         |
| 2                                 | 29.1                         | 29.6                            |         |
| 3                                 | 22.7                         | 20.1                            |         |
| 4                                 | 13.6                         | 8.6                             |         |
| 5                                 | 2.8                          | 1.9                             |         |

Data are given as percent or mean ± standard deviation (SD)

\* P-value calculated using chi-square test or ANOVA as appropriate

ECG: Electrocardiography; BMI: Body mass index

**Table 3.** Association between sleep duration and ischemic changes in electrocardiography (ECG)

| Sleep duration (hour) | Persons at risk | Model 1*<br>OR (95% CI) | Model 2**<br>OR (95% CI) | Model 3§<br>OR (95% CI) |
|-----------------------|-----------------|-------------------------|--------------------------|-------------------------|
| Less than 5           | 249             | 1.606 (1.178-2.189)     | 1.410 (1.025-1.940)      | 1.501 (1.085-2.076)     |
| 5                     | 319             | 0.991 (0.727-1.351)     | 0.990 (0.721-1.359)      | 0.947 (0.681-1.316)     |
| 6                     | 763             | 1.031 (0.821-1.294)     | 1.010 (0.801-1.273)      | 1.022 (0.808-1.294)     |
| 7                     | 807             | 1.085 (0.869-1.355)     | 1.059 (0.845-1.328)      | 1.063 (0.846-1.336)     |
| 8 <sup>‡</sup>        | 1133            | 1                       | 1                        | 1                       |
| 9 and more            | 234             | 1.156 (0.824-1.622)     | 1.136 (0.804-1.605)      | 1.136 (0.800-1.600)     |

\* Analysis without adjustment for covariates; \*\* Analysis adjusted for age and sex; § Analysis adjusted for age, sex, body mass index (BMI) (< 30, 30 ≤), smoking (past, never, current), physical activity (inactive, active), metabolic syndrome (number of components)

<sup>‡</sup> Reference group; OR: Odds ratio; CI: Confidence interval

## Discussion

In this study, we observed that short sleep duration of less than 5 hours per night compared to 8 hours of sleep was associated with increased frequency of electrocardiographic ischemic changes in Iranian middle-aged women but not in men. This association was independent of age, smoking, BMI, physical activity, and metabolic syndrome components. We did not find any association between long sleep duration and ischemic changes.

Association of short sleep duration with IHD was reported in previous studies in other countries.<sup>2,8,21-24</sup> Meisinger et al. examined association between sleep duration and incidence of MI in Monica Augsburg cohort study. They stratified the subjects in sex groups and after adjustment for possible confounders the hazard ratio (HR) of MI in women sleeping ≤ 5 hours was 2.98 (95% CI, 1.48-6.03) compared with women sleeping 8 hours; the corresponding HR in men was 1.13 (95% CI, 0.66-1.92); thus, a positive association between short sleep duration and incidence of MI

among middle-aged women but not in men was observed.<sup>8</sup> Their results were similar to our findings. Aggarwal et al. in a cross sectional study from the National Health and Nutrition Examination Survey of noninstitutionalized United States (US) civilians found that there was significant increase in MI prevalence in those with less than 6 hours of sleep and increase in coronary artery disease (CAD) prevalence in those with more than 8 hours of sleep.<sup>25</sup> Cappuccio et al. reported in their meta-analysis that both short and long sleep duration was associated with coronary heart disease (CHD).<sup>26</sup>

The possible mechanisms of association between short sleep duration and CVD are largely described in previous studies. These mechanisms include changes in appetite regulating hormones which lead to increased calorie intake,<sup>27,28</sup> increased sympathetic system activity,<sup>29,30</sup> dysregulation of endocrine system causing impaired glucose tolerance and increased cortisol secretion.<sup>31,32</sup> Another possible mechanism is due to inflammation process which promotes atherosclerosis.<sup>33,34</sup>

**Table 4.** Association between sleep duration and ischemic changes in electrocardiography (ECG) by sex groups

| Sex group | Sleep duration (hour) | Persons at risk | Model 1*<br>OR (95% CI) | Model 3**<br>OR (95% CI) |
|-----------|-----------------------|-----------------|-------------------------|--------------------------|
| Women     | Less than 5           | 148             | 1.550 (1.054-2.277)     | 1.565 (1.052-2.329)      |
|           | 5                     | 149             | 1.050 (0.699-1.577)     | 1.002 (0.657-1.529)      |
|           | 6                     | 394             | 1.108 (0.831-1.478)     | 1.097 (0.819-1.470)      |
|           | 7                     | 439             | 1.257 (0.955-1.655)     | 1.242 (0.939-1.642)      |
|           | 8 <sup>‡</sup>        | 583             | 1                       | 1                        |
|           | 9 and more            | 128             | 1.119 (0.730-1.717)     | 1.134 (0.737-1.743)      |
| Men       | Less than 5           | 101             | 1.494 (0.866-2.576)     | 1.455 (0.833-2.539)      |
|           | 5                     | 170             | 0.995 (0.607-1.630)     | 0.860 (0.509-1.456)      |
|           | 6                     | 369             | 0.905 (0.615-1.332)     | 0.898 (0.603-1.338)      |
|           | 7                     | 368             | 0.738 (0.492-1.108)     | 0.765 (0.507-1.154)      |
|           | 8 <sup>‡</sup>        | 550             | 1                       | 1                        |
|           | 9 and more            | 106             | 1.156 (0.653-2.047)     | 1.181 (0.662-2.108)      |

\* Analysis without adjustment for covariates; \*\* Analysis adjusted for age, body mass index (BMI) (< 30, 30 ≤), smoking (past, never, current), physical activity (inactive, active), metabolic syndrome (number of components)

<sup>‡</sup> Reference group; OR: Odds ratio; CI: Confidence interval



Studies which reported the association between long sleep duration and CVD were unable to find any specific mechanism for explaining the association. One hypothesis is that long sleep duration correlates by other comorbidities and underlying health issues that may confound with CVD.<sup>35-37</sup> As comorbidities are more prevalent in elderly individuals, the association of long sleep duration with CVD should mostly be observed in old population and this can explain the absence of this association in our study of middle-aged population.

The gender-specific association between short sleep duration and electrocardiographic ischemic changes that we found is in concordance with some previous studies; Ikehara et al. conducted a cohort study to observe the association between sleep duration and mortality from CVD and other causes in Japan; and they found that the association between short sleep duration and IHD was only significant in women.<sup>38</sup> Also in Monica Augsburg cohort study this association was significant only in women.<sup>8</sup> There is no accurate explanation for this gender discrepancy, some different mechanisms may play role in the effect of sleep on IHD in women; women have different sleep patterns and sleep disorders,<sup>39,40</sup> some CVD risk factors that may interact with the association between sleep and CVD have different significances in women;<sup>41,42</sup> there are reports that show an association between short sleep duration and hypertension only in women.<sup>43-45</sup> All of these differences may reinforce the impact of short sleep on IHD in women and these gender differences need to be evaluated in further studies.

Our study had some limitations; first of all, the cross sectional design of study makes us unable to observe the causality and direction of association between sleep duration and IHD. Another limitation that also has been addressed in many previous studies is the subjective evaluation of sleep duration which may not be very accurate but it is still useful and reliable according to some researches.<sup>46-48</sup> We did not evaluate other sleep parameters like sleep disturbances, difficulty falling sleep, and sleep quality which seem to be important in interpreting the effect of sleep on CVD.

In this study, we performed ECG in all participants, which led in finding even asymptomatic patients with ischemia, although ECG is not enough criteria for diagnosing IHD. We adjusted the analysis for common IHD risk factors. We did not have data of sleep apnea in our population, but we tried to modify its effect by adjusting the analysis for BMI

groups of  $30 \leq$  and  $30 >$ .

### Conclusion

In conclusion, this cross-sectional study of Iranian middle-aged population showed that short sleep duration may increase the risk of IHD in women, and this should be evaluated in further prospective studies.

### Acknowledgments

This research is done using data base of Isfahan Healthy Heart Program that was conducted by Isfahan Cardiovascular Institute with the collaboration of Isfahan Provincial Health Center, both affiliated to Isfahan University of Medical Sciences. The authors thank the participating personnel of Isfahan Cardiovascular Institute, especially Mrs Fatemeh Noori from statistical unit.

### Conflict of Interests

Authors have no conflict of interests.

### References

1. Finegold JA, Asaria P, Francis DP. Mortality from ischaemic heart disease by country, region, and age: Statistics from World Health Organisation and United Nations. *Int J Cardiol* 2013; 168(2): 934-45.
2. Kronholm E, Laatikainen T, Peltonen M, Sippola R, Partonen T. Self-reported sleep duration, all-cause mortality, cardiovascular mortality and morbidity in Finland. *Sleep Med* 2011; 12(3): 215-21.
3. Shan Z, Ma H, Xie M, Yan P, Guo Y, Bao W, et al. Sleep duration and risk of type 2 diabetes: A meta-analysis of prospective studies. *Diabetes Care* 2015; 38(3): 529-37.
4. Gottlieb DJ, Redline S, Nieto FJ, Baldwin CM, Newman AB, Resnick HE, et al. Association of usual sleep duration with hypertension: The Sleep Heart Health Study. *Sleep* 2006; 29(8): 1009-14.
5. Wu Y, Zhai L, Zhang D. Sleep duration and obesity among adults: A meta-analysis of prospective studies. *Sleep Med* 2014; 15(12): 1456-62.
6. Najafian J, Toghianifar N, Mohammadifard N, Nouri F. Association between sleep duration and metabolic syndrome in a population-based study: Isfahan Healthy Heart Program. *J Res Med Sci* 2011; 16(6): 801-6.
7. Hoevenaer-Blom MP, Spijkerman AM, Kromhout D, van den Berg JF, Verschuren WM. Sleep duration and sleep quality in relation to 12-year cardiovascular disease incidence: The MORGEN study. *Sleep* 2011; 34(11): 1487-92.
8. Meisinger C, Heier M, Lowel H, Schneider A, Doring A. Sleep duration and sleep complaints and risk of myocardial infarction in middle-aged men

- and women from the general population: The MONICA/KORA Augsburg cohort study. *Sleep* 2007; 30(9): 1121-7.
9. Qureshi AI, Giles WH, Croft JB, Bliwise DL. Habitual sleep patterns and risk for stroke and coronary heart disease: A 10-year follow-up from NHANES I. *Neurology* 1997; 48(4): 904-11.
  10. Suzuki E, Yorifuji T, Ueshima K, Takao S, Sugiyama M, Ohta T, et al. Sleep duration, sleep quality and cardiovascular disease mortality among the elderly: A population-based cohort study. *Prev Med* 2009; 49(2-3): 135-41.
  11. Sabanayagam C, Shankar A. Sleep duration and cardiovascular disease: Results from the National Health Interview Survey. *Sleep* 2010; 33(8): 1037-42.
  12. Ayas NT, White DP, Manson JE, Stampfer MJ, Speizer FE, Malhotra A, et al. A prospective study of sleep duration and coronary heart disease in women. *Arch Intern Med* 2003; 163(2): 205-9.
  13. Holliday EG, Magee CA, Kritharides L, Banks E, Attia J. Short sleep duration is associated with risk of future diabetes but not cardiovascular disease: A prospective study and meta-analysis. *PLoS One* 2013; 8(11): e82305.
  14. Chandola T, Ferrie JE, Perski A, Akbaraly T, Marmot MG. The effect of short sleep duration on coronary heart disease risk is greatest among those with sleep disturbance: A prospective study from the Whitehall II cohort. *Sleep* 2010; 33(6): 739-44.
  15. Mallon L, Broman JE, Hetta J. Sleep complaints predict coronary artery disease mortality in males: A 12-year follow-up study of a middle-aged Swedish population. *J Intern Med* 2002; 251(3): 207-16.
  16. Sarraf-Zadegan N, Sadri G, Malek Afzali H, Baghaei M, Mohammadi Fard N, Shahrokhi S, et al. Isfahan Healthy Heart Programme: A comprehensive integrated community-based programme for cardiovascular disease prevention and control. Design, methods and initial experience. *Acta Cardiol* 2003; 58(4): 309-20.
  17. Prineas RJ, Crow RS, Zhang ZM. The Minnesota code manual of electrocardiographic findings. Berlin, London: Springer Science & Business Media; 2009.
  18. Pereira MA, FitzerGerald SJ, Gregg EW, Joswiak ML, Ryan WJ, Suminski RR, et al. A collection of physical activity questionnaires for health-related research. *Med Sci Sports Exerc* 1997; 29(6 Suppl): S1-205.
  19. Grundy SM, Brewer HB Jr, Cleeman JI, Smith SC Jr, Lenfant C. Definition of metabolic syndrome: Report of the National Heart, Lung, and Blood Institute/American Heart Association conference on scientific issues related to definition. *Circulation* 2004; 109(3): 433-8.
  20. Hirshkowitz M, Whiton K, Albert SM, Alessi C, Bruni O, DonCarlos L, et al. National Sleep Foundation's sleep time duration recommendations: Methodology and results summary. *Sleep Health* 2015; 1(1): 40-3.
  21. Eguchi K, Pickering TG, Schwartz JE, Hoshida S, Ishikawa J, Ishikawa S, et al. Short sleep duration as an independent predictor of cardiovascular events in Japanese patients with hypertension. *Arch Intern Med* 2008; 168(20): 2225-31.
  22. Grandner MA, Jackson NJ, Pak VM, Gehrman PR. Sleep disturbance is associated with cardiovascular and metabolic disorders. *J Sleep Res* 2012; 21(4): 427-33.
  23. King CR, Knutson KL, Rathouz PJ, Sidney S, Liu K, Lauderdale DS. Short sleep duration and incident coronary artery calcification. *JAMA* 2008; 300(24): 2859-66.
  24. Hamazaki Y, Morikawa Y, Nakamura K, Sakurai M, Miura K, Ishizaki M, et al. The effects of sleep duration on the incidence of cardiovascular events among middle-aged male workers in Japan. *Scand J Work Environ Health* 2011; 37(5): 411-7.
  25. Aggarwal S, Loomba RS, Arora RR, Molnar J. Associations between sleep duration and prevalence of cardiovascular events. *Clin Cardiol* 2013; 36(11): 671-6.
  26. Cappuccio FP, Cooper D, D'Elia L, Strazzullo P, Miller MA. Sleep duration predicts cardiovascular outcomes: A systematic review and meta-analysis of prospective studies. *Eur Heart J* 2011; 32(12): 1484-92.
  27. Taheri S, Lin L, Austin D, Young T, Mignot E. Short sleep duration is associated with reduced leptin, elevated ghrelin, and increased body mass index. *PLoS Med* 2004; 1(3): e62.
  28. Spiegel K, Leproult R, L'hermite-Balériaux M, Copinschi G, Penev PD, Van Cauter E. Leptin levels are dependent on sleep duration: Relationships with sympathovagal balance, carbohydrate regulation, cortisol, and thyrotropin. *J Clin Endocrinol Metab* 2004; 89(11): 5762-71.
  29. Zhong X, Hilton HJ, Gates GJ, Jelic S, Stern Y, Bartels MN, et al. Increased sympathetic and decreased parasympathetic cardiovascular modulation in normal humans with acute sleep deprivation. *J Appl Physiol* (1985) 2005; 98(6): 2024-32.
  30. Lusardi P, Mugellini A, Preti P, Zoppi A, Derosa G, Fogari R. Effects of a restricted sleep regimen on ambulatory blood pressure monitoring in normotensive subjects. *Am J Hypertens* 1996; 9(5): 503-5.
  31. Leproult R, Copinschi G, Buxton O, Van Cauter E. Sleep loss results in an elevation of cortisol levels the next evening. *Sleep* 1997; 20(10): 865-70.
  32. Copinschi G. Metabolic and endocrine effects of sleep deprivation. *Essent Psychopharmacol* 2005; 6(6): 341-7.

33. Aldabal L, Bahammam AS. Metabolic, endocrine, and immune consequences of sleep deprivation. *Open Respir Med J* 2011; 5: 31-43.
34. Irwin MR, Carrillo C, Olmstead R. Sleep loss activates cellular markers of inflammation: Sex differences. *Brain Behav Immun* 2010; 24(1): 54-7.
35. Stranges S, Dorn JM, Shipley MJ, Kandala NB, Trevisan M, Miller MA, et al. Correlates of short and long sleep duration: A cross-cultural comparison between the United Kingdom and the United States: The Whitehall II Study and the Western New York Health Study. *Am J Epidemiol* 2008; 168(12): 1353-64.
36. Youngstedt SD, Kripke DF. Long sleep and mortality: Rationale for sleep restriction. *Sleep Med Rev* 2004; 8(3): 159-74.
37. Patel SR, Malhotra A, Gottlieb DJ, White DP, Hu FB. Correlates of long sleep duration. *Sleep* 2006; 29(7): 881-9.
38. Ikehara S, Iso H, Date C, Kikuchi S, Watanabe Y, Wada Y, et al. Association of sleep duration with mortality from cardiovascular disease and other causes for Japanese men and women: The JACC study. *Sleep* 2009; 32(3): 295-301.
39. Mallampalli MP, Carter CL. Exploring sex and gender differences in sleep health: A Society for Women's Health Research Report. *J Womens Health (Larchmt)* 2014; 23(7): 553-62.
40. Krishnan V, Collop NA. Gender differences in sleep disorders. *Curr Opin Pulm Med* 2006; 12(6): 383-9.
41. Maas AH, Appelman YE. Gender differences in coronary heart disease. *Neth Heart J* 2010; 18(12): 598-602.
42. Tan YY, Gast GC, van der Schouw YT. Gender differences in risk factors for coronary heart disease. *Maturitas* 2010; 65(2): 149-60.
43. Cappuccio FP, Stranges S, Kandala NB, Miller MA, Taggart FM, Kumari M, et al. Gender-specific associations of short sleep duration with prevalent and incident hypertension: The Whitehall II Study. *Hypertension* 2007; 50(4): 693-700.
44. Wang H, Zee P, Reid K, Chervin RD, Patwari PP, Wang B, et al. Gender-specific association of sleep duration with blood pressure in rural Chinese adults. *Sleep Med* 2011; 12(7): 693-9.
45. Zuo H, Wang J, Lin Y, Deng L, Su J, Zhang J. Gender-specific associations of sleep duration with uncontrolled blood pressure in middle-aged patients. *Clin Exp Hypertens* 2016; 38(2): 125-30.
46. Hauri PJ, Wisbey J. Wrist actigraphy in insomnia. *Sleep* 1992; 15(4): 293-301.
47. Lockley SW, Skene DJ, Arendt J. Comparison between subjective and actigraphic measurement of sleep and sleep rhythms. *J Sleep Res* 1999; 8(3): 175-83.
48. Signal TL, Gale J, Gander PH. Sleep measurement in flight crew: Comparing actigraphic and subjective estimates to polysomnography. *Aviat Space Environ Med* 2005; 76(11): 1058-63.

**How to cite this article:** Khani M, Najafian J, Taheri M, Akhavan-Tabib A, Hosseini S. **Association between sleep duration and electrocardiographic ischemic changes in middle-aged population: Isfahan Healthy Heart Program.** *ARYA Atheroscler* 2018; 14(3): 115-21.

## Serum interleukin-18 and extent of coronary artery disease in unstable angina

Masoumeh Sadeghi<sup>(1)</sup>, Maryam Gheraati<sup>(2)</sup>, Azam Soleimani<sup>(3)</sup>, Afshin Amirpour<sup>(4)</sup>,  
Marzieh Taheri<sup>(5)</sup>, Safoura Yazdekhashti<sup>(6)</sup>, Elham Valikhani<sup>(6)</sup>

## Original Article

## Abstract

**BACKGROUND:** Interleukin-18 (IL-18) is an inflammatory marker with challenging role in atherosclerosis. The present study was carried out aiming to evaluate the association between IL-18 serum level and extent and severity of atherosclerosis among young patients with unstable angina (UA) who underwent coronary angiography.

**METHODS:** This cross sectional study was performed from July to October 2015 in Chamran heart center, Isfahan, Iran. 180 patients with UA in the age range of below 50 years entered the study. All demographic, past history, physical examination, electrocardiogram (EKG or ECG), and transthoracic echocardiogram (TTE) data were collected. Serum level of IL-18 was measured using enzyme-linked immunosorbent assay (ELISA) method. A coronary angiography was performed on all patients to evaluate the presence and the incidence rate of coronary artery disease (CAD).

**RESULTS:** Mean age of the patients was  $46.0 \pm 4.6$  years [ $47.4 \pm 4.3$  and  $45.9 \pm 4.9$  among patients with CAD and normal coronary, respectively ( $P = 0.040$ )]. Rate of severe CAD was greater among men compared to women with values 67.8% and 51.8%, respectively ( $P = 0.032$ ). The median [interquartile range (IQR)] value of serum IL-18 among patients with CAD [192.86 (128.03,325.75)] was higher than normal coronary subjects [172.81 (139.77,243.21)], however it was not significant ( $198.4 \pm 93.5$ ,  $P = 0.287$ ). A significant difference between serum IL-18 level and number of stenosis vessels was detected only among women ( $P = 0.032$ ).

**CONCLUSION:** Serum IL-18 level can predict the number of coronary arteries with significant stenosis among women with unstable angina.

**Keywords:** Interleukin-18, Unstable Angina, Atherosclerosis, Angiography

*Date of submission:* 14 Mar. 2017, *Date of acceptance:* 18 Mar. 2018

## Introduction

Coronary artery disease (CAD) is the main cause of mortality in developed and under developing countries.<sup>1</sup> With increasing age, atherosclerosis is aggravated and finally causes clinical scenarios like stable and unstable angina (UA) and acute myocardial infarction (MI). It is estimated that atherosclerosis will be the first cause of death in the entire world by 2020.<sup>2</sup> Atherogenesis is a lifelong process.<sup>3,4</sup> It is documented that atherosclerosis and its most dramatic consequence, MI, is an inflammatory process.<sup>5,6</sup>

Beside traditional risk factors and behavioral factors like stress, inflammatory markers have

recently been proposed to have diagnostic and prognostic role in atherosclerosis and their association with CAD severity is controversial.<sup>7-9</sup> Interleukin-18 (IL-18), of the cytokine family, is a proinflammatory cytokine which is expressed mainly by macrophages and acts on its receptor on the membrane of endothelial cells, lymphocytes, smooth muscle cells (all components of the atherosclerotic plaque) and induces Interferon-gamma (IFN- $\gamma$ ) production, endothelial dysfunction and plaque instability.<sup>10,11</sup> Some studies have shown increased IL-18 mRNA expression in carotid unstable plaques and it has been shown that increased serum level of IL-18 is associated with

1- Professor, Cardiac Rehabilitation Research Center, Cardiovascular Research Institute, Isfahan University of Medical Sciences, Isfahan, Iran

2- Interventional Cardiology Research Center, Cardiovascular Research Institute, Isfahan University of Medical Sciences, Isfahan, Iran

3- Assistant Professor, Heart Failure Research Center, Cardiovascular Research Institute, Isfahan University of Medical Sciences, Isfahan, Iran

4- Assistant Professor, Hypertension Research Center, Cardiovascular Research Institute, Isfahan University of Medical Sciences, Isfahan, Iran

5- Isfahan Cardiovascular Research Center, Cardiovascular Research Institute, Isfahan University of Medical Sciences, Isfahan, Iran

6- Cardiac Rehabilitation Research Center, Cardiovascular Research Institute, Isfahan University of Medical Sciences, Isfahan, Iran

Correspondence to: Azam Soleimani, Email: [asoleimani@gmail.com](mailto:asoleimani@gmail.com)



increased carotid intima media thickness (CIMT).<sup>12,13</sup> In a prospective study, IL-18 was independent predictor of cardiovascular mortality with 3.3 fold increased risk of death among stable and unstable patients with high level of serum IL-18.<sup>14</sup>

Regarding the lack of data on the role of IL-18 in severity of atherosclerosis, the authors in the present study aimed to evaluate the association of serum IL-18 level with CAD presence and extent among young patients with UA.

## Materials and Methods

This was a cross sectional study performed from July to October 2015 in Chamran heart center, Isfahan, Iran. The inclusion criteria were patients younger than 50 years old referring to the hospital with diagnosis of UA. UA diagnosis was defined as the new-onset angina pectoris during the recent 4 weeks, angina pectoris lasting more than 10 minutes at rest or with minimal exertion, and crescendo pattern of known previous stable angina, all with or without dynamic ST segment depression or T wave inversion in electrocardiogram (EKG or ECG).

Patients with any history of MI, coronary artery bypass graft (CABG), percutaneous coronary intervention (PCI), severe valvular heart disease (VHD), severe uncontrolled systemic hypertension (systolic blood pressure  $\geq 220$  mmHg, diastolic blood pressure  $\geq 130$  mmHg), severe pulmonary arterial hypertension (PAH) (mean pulmonary artery pressure  $> 40$  mmHg), and history of chronic heart failure or acute heart failure were excluded. The study was approved by the Institutional Bioethics Committee (IEC), and informed written consent was obtained from all the patients. All patients meeting the inclusion and exclusion criteria entered the study protocol. All patients underwent complete history taking, physical examination, and transthoracic echocardiogram (TTE) by a cardiologist. Serial ECGs (each 30 minutes up to 3 times and during chest pain) were taken and interpreted by the same cardiologist. 5 ml of blood was taken via a peripheral venous line from all patients before catheterization procedure. After separation of serum, it was transmitted to the  $-70$  °C laboratory medium to measure the level of IL-18 with enzyme-linked immunosorbent assay (ELISA) method (using Humal IL18 ELISA BMS 267.2 and BMS 267.2 ten, Mender med system).

Hypertension was defined as having systolic blood pressure at least 140 mmHg, and/or diastolic blood pressure at least 90 mmHg, or being on antihypertensive drugs.<sup>15</sup> Fasting blood glucose  $\geq 126$  mg/dl or 2-hour postprandial plasma glucose

$\geq 200$  mg/dl or using anti-diabetic agents was defined as diabetes mellitus (DM).<sup>7</sup> Dyslipidemia was signified as total cholesterol  $> 200$  mg/dl, triglyceride  $> 150$  mg/dl, low-density lipoprotein (LDL)  $> 100$  mg/dl, or high-density lipoprotein (HDL)  $< 35$  mg/dl.<sup>7</sup> Patients who smoked daily were considered as current smokers.<sup>16</sup>

According to the American college of cardiology (ACC)/American heart association (AHA) guidelines for management of patients with non ST elevation acute coronary syndrome (NSTEMI-ACS), all the patients in the present study underwent coronary angiography via right femoral artery approach with Siemens system.<sup>17</sup> Angiography film was reported with two cardiologists who were blinded about the patient history and study protocol in different times.

In case of the lack of stenosis among patients, they were placed into the CAD-free group. Extent of CAD was defined as more than 75% stenosis of any of coronary arteries or branches and  $\geq 50\%$  stenosis of left main coronary artery (LMCA).<sup>18</sup>

The data were reported as rate (%) and mean  $\pm$  standard deviation (SD) or median [interquartile range (IQR)] for qualitative and quantitative data, respectively. Kolmogorov-Smirnov (K-S) test was performed to check the assumption of normality of distribution of the quantitative variables. Mann-Whitney test, independent sample t-test, and Kruskal-Wallis test were performed to assess the group differences in quantitative variables (where appropriate) and the chi-square test was used to evaluate and perform comparisons among the qualitative variables. Multinomial logistic regression model was performed to evaluate IL-18 quartile changes (trend of quartiles) among patients with different number of involved vessels in comparison to participants without any involved vessels. Statistical analysis was performed with SPSS software (version 15.0, SPSS Inc., Chicago, IL, USA). The results were assumed to be statistically significant if  $P \leq 0.050$ .

## Results

In this study, 180 patients with UA underwent coronary angiography. Patients were divided into two groups based on presence of CAD. 107 (59.9%) and 69 (40.1%) of the subjects had CAD and normal coronary angiogram, respectively. Mean age of the patients was  $46.0 \pm 4.6$  years ( $47.4 \pm 4.3$  and  $45.9 \pm 4.9$ ,  $P=0.040$  among patient with and without CAD, respectively). Severity of CAD was greater among men than women ( $P = 0.032$ ).



**Table 1.** Demographic characteristics of subjects

| Variables                     | CAD (n = 107) | CAD-free (n = 73) | P       |
|-------------------------------|---------------|-------------------|---------|
| Age (years) [mean ± SD]       | 47.4 ± 4.3    | 45.9 ± 4.9        | 0.040*  |
| Men [n (%)]                   | 59 (57.3)     | 28 (40.6)         | 0.032** |
| Hypertension [n (%)]          | 38 (36.9)     | 16 (23.2)         | 0.058** |
| DM [n (%)]                    | 29 (28.2)     | 7 (10.2)          | 0.004** |
| Dyslipidemia [n (%)]          | 50 (48.5)     | 20 (29.0)         | 0.010** |
| Smokers [n (%)]               | 35 (34.0)     | 14 (20.3)         | 0.051** |
| Family history of CAD [n (%)] | 55 (53.4)     | 39 (56.5)         | 0.687** |

SD: Standard deviation; DM: Diabetes mellitus; CAD: Coronary artery disease

\* Independent t-test; \*\* Chi-Square test

Table 1 shows the incidence of cardiovascular risk factors in both groups. There was no significant difference in atherogenic risk factors like hypertension, smoking habits, and family history of CAD between the two groups. However, the incidence of DM and dyslipidemia was greater in CAD group ( $P < 0.050$ ).

Median (IQR) of serum IL-18 (picog/ml) in CAD group was higher in comparison with the CAD-free group. This difference was not significant [192.9 (128.0,325.7) vs 172.8 (139.8,243.2),  $P = 0.287$ ].

There was no significant difference in median (IQR) of serum IL-18 (picog/ml) levels based on the atherosclerotic risk factors except in participants with no family history of CAD ( $P = 0.027$ ) (Table 2).

The serum level of IL-18 (picog/ml) differed significantly based on the number of involved vessels in women, but not in overall nor in men (Table 3).

Odds ratios 95% confidence interval [OR (95% CI)] of IL-8 quartile changes among patients with different number of involved vessels in comparison to those without any involved vessels was shown in table 4. There was no significant difference between OR (95% CI) of IL8 quartile changes among patients with different involvement in comparison

to normal participants, in addition, adjustment for age, sex, DM, hypertension, dyslipidemia was performed (Table 4).

## Discussion

This study showed that the serum level of IL-18 among patients with UA had significant relation with the number of coronary artery stenosis among women. In a basic animal study in 2002, Elhage et al. had noted IL-18 as a risk factor for atherosclerosis.<sup>19</sup> Chen et al. had shown that there was a direct relationship between serum IL-18 level and CAD severity among patients with UA as defined with a validated score.<sup>20</sup> Positive family history was correlated significantly to serum level of IL-18 among patients with CAD. This was in contradiction with the present study as there was no significant correlation between cardiovascular risk factors and IL-18. Blankenberg et al. in a prospective 5-year study on 10600 European men documented that serum IL-18 at baseline was a predictor for cardiovascular events and angina pain.<sup>21</sup> Although this study was performed only among men, it provided strong evidence for prognostic value of IL-18 as an inflammatory marker for cardiovascular events.

**Table 2.** Median interquartile range (IQR) for serum level of interleukin-18 (IL-18) (picog/ml) based on atherosclerotic risk factors among patients with and without unstable angina (UA)

| Risk factors                  | CAD                  | CAD-free             | P*    |
|-------------------------------|----------------------|----------------------|-------|
| Hypertension                  | 206.5 (136.6, 333.5) | 230.4 (164.6, 305.2) | 0.992 |
| Lack of hypertension          | 178.1 (122.8, 308.4) | 166.6 (130.5, 222.9) | 0.373 |
| DM                            | 226.5 (129.5, 337.9) | 170.7 (137.0, 286.6) | 0.754 |
| Lack of DM                    | 186.7 (126.8, 292.8) | 173.3 (140.4, 239.3) | 0.441 |
| Dyslipidemia                  | 201.9 (130.5, 326.2) | 170.2 (143.4, 250.5) | 0.463 |
| Lack of dyslipidemia          | 179.1 (125.5, 314.2) | 173.8 (131.3, 242.1) | 0.517 |
| Smoking                       | 179.1 (120.6, 343.9) | 170.7 (143.0, 289.7) | 0.737 |
| Lack of smoking               | 195.5 (131.0, 313.5) | 173.3 (122.5, 231.6) | 0.195 |
| Family history of CAD         | 162.9 (122.1, 247.1) | 169.7 (143.8, 249.9) | 0.470 |
| Lack of family history of CAD | 237.9 (138.1, 432.7) | 181.2 (103.6, 243.2) | 0.027 |

DM: Diabetes mellitus; CAD: Coronary artery disease

\* Mann-Whitney U test

**Table 3.** Median interquartile range (IQR) of serum level of interleukin-18 (IL-18) (picog/ml) based on the number of vessels involved and sex

| Sex   | Involvement    | Median (IQR)         | P*    |
|-------|----------------|----------------------|-------|
| Men   | Normal vessels | 173.3 (142.6, 270.1) | 0.962 |
|       | One vessel     | 178.6 (117.7, 310.6) |       |
|       | Two vessels    | 159.8 (131.0, 327.6) |       |
|       | Three vessels  | 203.7 (123.2, 270.1) |       |
| Women | Normal         | 168.6 (117.7, 233.7) | 0.032 |
|       | One vessel     | 218.8 (138.5, 331.2) |       |
|       | Two vessels    | 261.3 (180.1, 338.5) |       |
|       | Three vessels  | 131.0 (114.1, 156.4) |       |
| Total | Normal         | 172.8 (139.7, 243.2) | 0.284 |
|       | One vessel     | 196.1 (126.5, 328.5) |       |
|       | Two vessels    | 206.5 (141.2, 333.5) |       |
|       | Three vessels  | 137.3 (122.5, 231.9) |       |

\* Kruskal-wallis test

IQR: Interquartile range

Corson reported the relationship of IL-18 with cardiovascular events as well.<sup>22</sup> Interleukin-6 (IL-6), another inflammatory marker from cytokines family, was evaluated in the study by Gotsman et al.<sup>23</sup> They stated that there was significant correlation between serum level of IL-6 and CAD severity. However, they did not evaluate the number of diseased epicardial vessels in contrast to the present study. IL-6 and IL-18 are from the same cytokines family, hence the results of the former study may be expanded to other interleukins (ILs). Mallat et al. evaluated the role of IL-18 in a wider group of patients with acute coronary syndrome (ACS) including UA and patients with acute MI.<sup>24</sup> They confirmed elevated level of IL-18 among these patients and showed its strong direct relationship with severity of left ventricular systolic dysfunction. Ridker and Silvertown proposed that inflammatory markers had significant effect on progression of CVD and taking strategies to reduce these markers

would decrease their burden in the future.<sup>25</sup>

### Conclusion

Serum IL-18 level can predict the number of coronary arteries with significant stenosis among women with UA. We recommend a larger trial in both sexes in a longitudinal cohort study that can predict estimation power of IL-18 for cardiovascular events.

### Acknowledgments

This study was approved by the research council of Isfahan Cardiovascular Research Center (project number 88109). The authors specially appreciate the colleagues of Physiology Research Center for kindly cooperation in performing this study, and also all the patients who participated in this study voluntarily are appreciated.

### Conflict of Interests

Authors have no conflict of interests.

**Table 4.** Odds ratios 95% confidence interval [OR (95% CI)] of interleukin-18 (IL-18) (picog/ml) quartile changes among patients with different number of involved vessels in comparison to those without any involved vessels

| Involvement    | Crude             |       | Adjust 1         |       | Adjust 2         |       |
|----------------|-------------------|-------|------------------|-------|------------------|-------|
|                | OR (95% CI)       | P     | OR (95% CI)      | P     | OR (95% CI)      | P     |
| Normal vessels | 1*                | -     | 1*               | -     | 1*               | -     |
| One vessel     | 1.14 (0.84-1.56)  | 0.386 | 1.13 (0.82-1.57) | 0.440 | 1.06 (0.75-1.5)  | 0.718 |
| 2 vessels      | 1.29 (0.83-2.006) | 0.258 | 1.30 (0.83-2.03) | 0.245 | 1.20 (0.75-1.92) | 0.432 |
| 3 vessels      | 0.87 (0.52-1.43)  | 0.593 | 0.86 (0.51-1.44) | 0.578 | 0.81 (0.48-1.37) | 0.444 |

\* Participants without any involved vessels are considered as the reference group.

OR (95% CI): Odds ratios 95% confidence interval; Crude: Without adjustment; Adjust 1: Age-sex adjustment; Adjust 2: Age-sex-diabetes-hypertension-dyslipidemia adjustment; Multinomial logistic regression analysis was performed.

## References

1. Talaei M, Sarrafzadegan N, Sadeghi M, Oveisgharan S, Marshall T, Thomas GN, et al. Incidence of cardiovascular diseases in an Iranian population: The Isfahan Cohort Study. *Arch Iran Med* 2013; 16(3): 138-44.
2. Libby P. The pathogenesis of atherosclerosis . In: Kasper DL, Braunwald E, Fauci AS, Hauser S, Longo D, Jameson JL, Editors. *Harrison's Principles of Internal Medicine*. New York, NY: McGraw-Hill; 2005. p. 1425-30.
3. Ryan TJ, Anderson JL, Antman EM, Braniff BA, Brooks NH, Califf RM, et al. ACC/AHA guidelines for the management of patients with acute myocardial infarction: Executive summary. A report of the American College of Cardiology/American Heart Association Task Force on Practice Guidelines (Committee on Management of Acute Myocardial Infarction). *Circulation* 1996; 94(9): 2341-50.
4. Manton KG. The global impact of noncommunicable diseases: Estimates and projections. *World Health Stat Q* 1988; 41(3-4): 255-66.
5. Libby P, Ridker PM, Maseri A. Inflammation and atherosclerosis. *Circulation* 2002; 105(9): 1135-43.
6. Nicholls ES, Peruga A, Restrepo HE. Cardiovascular disease mortality in the Americas. *World Health Stat Q* 1993; 46(2): 134-50.
7. Sadeghi M, Talaei M, Oveisgharan S, Rabiei K, Dianatkah M, Bahonar A, et al. The cumulative incidence of conventional risk factors of cardiovascular disease and their population attributable risk in an Iranian population: The Isfahan Cohort Study. *Adv Biomed Res* 2014; 3: 242.
8. Roohafza H, Sadeghi M, Sarrafzadegan N, Baghaei A, Kelishadi R, Mahvash M, et al. Relation between stress and other life style factors. *Stress and Health* 2007; 23(1): 23-9.
9. Khayyam-Nekouei Z, Neshatdoost H, Yousefy A, Sadeghi M, Manshaee G. Psychological factors and coronary heart disease. *ARYA Atheroscler* 2013; 9(1): 102-11.
10. Mallat Z, Corbaz A, Scoazec A, Graber P, Alouani S, Esposito B, et al. Interleukin-18/interleukin-18 binding protein signaling modulates atherosclerotic lesion development and stability. *Circ Res* 2001; 89(7): E41-E45.
11. Szmítko PE, Wang CH, Weisel RD, de Almeida JR, Anderson TJ, Verma S. New markers of inflammation and endothelial cell activation: Part I. *Circulation* 2003; 108(16): 1917-23.
12. Mallat Z, Corbaz A, Scoazec A, Besnard S, Leseche G, Chvatchko Y, et al. Expression of interleukin-18 in human atherosclerotic plaques and relation to plaque instability. *Circulation* 2001; 104(14): 1598-603.
13. Yamagami H, Kitagawa K, Hoshi T, Furukado S, Hougaku H, Nagai Y, et al. Associations of serum IL-18 levels with carotid intima-media thickness. *Arterioscler Thromb Vasc Biol* 2005; 25(7): 1458-62.
14. Blankenberg S, Tiret L, Bickel C, Peetz D, Cambien F, Meyer J, et al. Interleukin-18 is a strong predictor of cardiovascular death in stable and unstable angina. *Circulation* 2002; 106(1): 24-30.
15. Talaei M, Sadeghi M, Mohammadifard N, Shokouh P, Oveisgharan S, Sarrafzadegan N. Incident hypertension and its predictors: The Isfahan Cohort Study. *J Hypertens* 2014; 32(1): 30-8.
16. Roohafza H, Sadeghi M, Shahnam M, Bahonar A, Sarrafzadegan N. Perceived factors related to cigarette and waterpipe (ghelyan) initiation and maintenance in university students of Iran. *Int J Public Health* 2011; 56(2): 175-80.
17. Anderson JL, Adams CD, Antman EM, Bridges CR, Califf RM, Casey DE Jr, et al. 2012 ACCF/AHA focused update incorporated into the ACCF/AHA 2007 guidelines for the management of patients with unstable angina/non-ST-elevation myocardial infarction: A report of the American College of Cardiology Foundation/American Heart Association Task Force on Practice Guidelines. *J Am Coll Cardiol* 2013; 61(23): e179-e347.
18. Mazaheri S, Sadeghi M, Sarrafzadegan N, Sanei H, Hekmatnia A, Tavakoli B. Correlation between body fat distribution, plasma lipids and apolipoproteins with the severity of coronary involvement in patients with stable angina. *ARYA Atheroscler* 2011; 6(4): 140-3.
19. Elhage R, Jawien J, Rudling M, Ljunggren HG, Takeda K, Akira S, et al. Reduced atherosclerosis in interleukin-18 deficient apolipoprotein E-knockout mice. *Cardiovasc Res* 2003; 59(1): 234-40.
20. Chen MC, Chen CJ, Yang CH, Wu CJ, Fang CY, Hsieh YK, et al. Interleukin-18: A strong predictor of the extent of coronary artery disease in patients with unstable angina. *Heart Vessels* 2007; 22(6): 371-5.
21. Blankenberg S, Luc G, Ducimetiere P, Arveiler D, Ferrieres J, Amouyel P, et al. Interleukin-18 and the risk of coronary heart disease in European men: The Prospective Epidemiological Study of Myocardial Infarction (PRIME). *Circulation* 2003; 108(20): 2453-9.
22. Corson MA. Emerging inflammatory markers for assessing coronary heart disease risk. *Curr Cardiol Rep* 2009; 11(6): 452-9.
23. Gotsman I, Stabholz A, Planer D, Pugatsch T, Lapidus L, Novikov Y, et al. Serum cytokine tumor necrosis factor-alpha and interleukin-6 associated with the severity of coronary artery disease: Indicators of an active inflammatory burden? *Isr Med Assoc J* 2008; 10(7): 494-8.
24. Mallat Z, Henry P, Fressonnet R, Alouani S,

Scoazec A, Beaufils P, et al. Increased plasma concentrations of interleukin-18 in acute coronary syndromes. *Heart* 2002; 88(5): 467-9.

25. Ridker PM, Silvertown JD. Inflammation, C-reactive protein, and atherothrombosis. *J Periodontol* 2008; 79(8 Suppl): 1544-51.

**How to cite this article:** Sadeghi M, Gheraati M, Soleimani A, Amirpour A, Taheri M, Yazdekhashti S, et al. **Serum interleukin-18 and extent of coronary artery disease in unstable angina.** *ARYA Atheroscler* 2018; 14(3): 122-7.

## Translunar versus transradial approach for coronary angiography and angioplasty: Considering their complications

Farshad Roghani-Dehkordi<sup>(1)</sup>, Rooholah Mansouri<sup>(2)</sup>, Alireza Khosravi<sup>(3)</sup>, Behzad Mahaki<sup>(4)</sup>, Mehdi Akbarzadeh<sup>(2)</sup>, Mohammad Kermani-Alghoraishi<sup>(5)</sup>

### Original Article

#### Abstract

**BACKGROUND:** Translunar approach was introduced as an alternative procedure for transradial coronary angiography (CAG) due to its safety and feasibility. The present study was accomplished with the aim to compare major and minor complications of these two upper extremity approaches in the population under study.

**METHODS:** In this prospective observational study, 216 patients who underwent CAG and/or angioplasty via radial (111 cases) or ulnar artery (105 cases) were observed and followed for 6 months and were evaluated for major adverse cardiac events (MACEs), minor and major neurovascular events (access related) of the arm including paresthesia/pain, pseudoaneurysm, artery spasm, arterial occlusion, large hematoma, and necessity for amputation or emergency surgery.

**RESULTS:** The majority of patients were men (62.1%) with a mean age of  $59.98 \pm 9.74$  years old. No MACEs and major life threatening vascular complication like large hematoma, need for amputation or surgery, and hand ischemia were occurred. There was no significant difference in minor complications, except for arterial occlusion 9.0 % vs 1.0 % and artery spasm 12.6 % vs 1.9 % in transradial and translunar approaches, respectively ( $P < 0.05$ ).

**CONCLUSION:** This study suggested that both transradial and translunar approaches were safe and feasible for CAG and/or angioplasty. However, regarding minor complications, arterial spasm and occlusion were significantly more common in transradial approach.

**Keywords:** Radial Artery, Ulnar Artery, Coronary Angiography, Complication

*Date of submission:* 17 Feb. 2017, *Date of acceptance:* 12 Mar. 2018

#### Introduction

Coronary angiography (CAG) is known as a gold standard diagnostic approach for atherosclerotic coronary artery diseases (CADs).<sup>1-3</sup> Transfemoral artery approach is a common and routine method for CAG and percutaneous coronary intervention (PCI). Moreover, transradial approach is known as a safe alternative method with lesser access site bleeding, patient satisfaction, and preference and early ambulation.<sup>4,5</sup> Some limitations of transradial approach are small size artery, radial artery anatomic variations (radial loop, highly take off, tortuosity), radial artery harvesting for coronary artery bypass grafting (CABG), radial artery occlusion (RAO), and radial artery

spasm.<sup>6-8</sup> Accordingly, translunar approach was performed since more than a decade ago by Terashima et al.<sup>9</sup> Although several studies suggested that translunar approach is a safe and feasible method for coronary angiography and angioplasty,<sup>6-9</sup> higher cross over rate, access failure, and possibility of ulnar nerve trauma are challenging.<sup>10</sup> However, the authors in the present study believe that the odds of these side effects are negligible when this method is performed by experienced operators. Therefore, the present study was carried out to assess the transradial versus translunar access-related complications in our center, two hospitals of Isfahan University of Medical Sciences (Shahid Chamran Heart Center and Noor

1- Associate Professor, Interventional Cardiology Research Center, Cardiovascular Research Institute, Isfahan University of Medical Sciences, Isfahan, Iran

2- Intervention Fellowship Practitioner, Isfahan Cardiovascular Research Center, Cardiovascular Research Institute, Isfahan University of Medical Sciences, Isfahan, Iran

3- Associate Professor, Hypertension Research Center, Cardiovascular Research Institute, Isfahan University of Medical Sciences, Isfahan, Iran

4- Associate Professor, Department of Biostatistics, School of Health, Kermanshah University of Medical Sciences, Kermanshah, Iran

5- Assistant Professor, Cardiac Rehabilitation Research Center, Cardiovascular Research Institute, Isfahan University of Medical Sciences, Isfahan, Iran

Correspondence to: Rooholah Mansouri, Email: roohollahmansoori@gmail.com



Hospital), Isfahan, Iran.

### Materials and Methods

In this prospective observational study, 231 patients candidate for CAG or angioplasty were examined from July 2016 to Dec 2016. The patients were admitted to two hospitals of Isfahan University of Medical Sciences (Shahid Chamran Heart Center and Noor Hospital). Inclusion criteria were age > 18 years old, indication for CAG and angioplasty, and written informed consent to participate in the study. Patients with acute coronary syndrome (ACS), cardiogenic shock and/or hemodynamic instability, chronic hemodialysis, dermal myoskeletal forearm deformities, history of CABG, patients with planned elective femoral approach, and patients with abnormal Allen and reverse Allen Test were excluded from the study. The patients were randomly divided into two groups tolerating transradial and transulnar approaches with 118 and 113 cases, respectively. All procedures were performed by single interventional cardiologist expert in transradial and ulnar approaches.

Allen and the reverse Allen tests for assessment of deep palmar arch perfusion were performed for all of the patients. After prep and drep, 2 cc of lidocaine 2% was injected subcutaneously at the planned puncture site (3 cm above proximal wrist crease). Following puncture with fine needle, radial sheath (5-6 French) was inserted over hydrophilic guidewire. A cocktail which contained 20 cc of normal saline, 200 microgram nitrate and 2.5 mg verapamil, flushed through 5-6 French hydrophilic sheath. Unfractionated heparin (5000 units) was also injected systemically.<sup>11</sup> Over the 0.035-inch guide wire, the diagnostic catheter (Tiger 5-6 French) was inserted. EBU and Judkins catheters were used for angioplasty and TR band was used for final hemostasis.

In this study, the incidence of death, myocardial infarction (MI), stroke, and urgent target vessel revascularization (TVR) as major adverse cardiac

events (MACEs) within the hospital and during the 6 months after the procedure were assessed.

Major and minor neurovascular events (access related) of the arm including pain/motor paralysis/paresthesia, large hematoma, pseudoaneurysm, artery spasm, arterial occlusion, and necessity for amputation or emergency surgery were also recorded. The hematoma grading was according to the classification proposed in the study by Bertrand et al.<sup>12,13</sup> This scale included a hematoma < 5 cm, 5-10 cm, > 10 cm, proximal to the elbow hematoma, and compartment syndrome as grade I, grade II, grade III (grade I to III were distal to the elbow, grade IV, and grade V, respectively).<sup>12,13</sup> The follow up data were obtained by an interventional cardiologist in two separate clinic visits in 3 and 6 months after the procedure. Demographic data included age, gender, and CAD risk factors like diabetes mellitus (DM), smoking, dyslipidemia, hypertension, and history of old MI. The data were collected through the data gathering forms.

Pearson's chi-square test and Fisher's exact test were considered for analyzing categorical data. Statistical analysis of data was carried out using the statistical program for social sciences (SPSS) software (version 15.0, SPSS Inc., Chicago, IL, USA). All differences were considered as statistically significant at a P value less than 0.050.

### Results

Four patients excluded from the study because of uncooperation. Failure to puncture (3 and 5 cases in radial and ulnar approaches, respectively) and failure to wire cross (3 cases in radial approach) were the result of unsuccessful procedures. Finally, 216 patients including 111 and 105 cases respectively in transradial and transulnar approaches were analyzed. The majority of the subjects were men (62.1%) with a mean age of  $59.98 \pm 9.74$  years old. There was no significant difference between the groups in terms of the demographic and clinical data (Table 1).

**Table 1.** Demographic and clinical characteristics of the study subjects

| Demographic and clinical variables | Transradial approach (n = 111) | Transulnar approach (n = 105) | P     |
|------------------------------------|--------------------------------|-------------------------------|-------|
| Age (mean $\pm$ SD)                | 59.55 $\pm$ 10.26              | 60.32 $\pm$ 9.20              | 0.622 |
| Gender (men) [n (%)]               | 69 (62.1)                      | 63 (60.0)                     | 0.745 |
| Hypertension [n (%)]               | 21 (18.9)                      | 23 (21.9)                     | 0.586 |
| DM [n (%)]                         | 16 (14.4)                      | 22 (20.9)                     | 0.207 |
| Dyslipidemia [n (%)]               | 22 (19.8)                      | 28 (26.6)                     | 0.233 |
| Previous MI [n (%)]                | 14 (12.6)                      | 9 (8.5)                       | 0.336 |
| Current smoker [n (%)]             | 13 (11.7)                      | 9 (8.5)                       | 0.446 |
| Angiography [n (%)]                | 69 (62.1)                      | 83 (79.0)                     | 0.007 |
| Angioplasty [n (%)]                | 42 (37.8)                      | 22 (20.9)                     | 0.007 |

SD: Standard deviation; DM: Diabetes Mellitus; MI: Myocardial infarction

**Table 2.** Comparison of minor and major complications of transradial versus transulnar approach in coronary artery angiography and angioplasty

| Complication                                | Transradial approach (n = 111) | Transulnar approach (n = 105) | P     |
|---|--------------------------------|-------------------------------|-------|
| MACEs                                       | 0 (0.0)                        | 0 (0.0)                       | -     |
| Hematoma                                    | 11 (9.9)                       | 11 (10.4)                     | 0.893 |
| Paresthesia/pain                            | 13 (11.7)                      | 12 (11.4)                     | 0.948 |
| Artery spasm                                | 14 (12.6)                      | 2 (1.9)                       | 0.002 |
| Pseudoaneurysm                              | 0 (0.0)                        | 0 (0.0)                       | -     |
| Arterial occlusion                          | 10 (9.0)                       | 1 (0.9)                       | 0.006 |
| Amputation/emergency surgery/large hematoma | 0 (0.0)                        | 0 (0.0)                       | -     |

MACEs: Major adverse cardiac events

No MACEs were occurred in both groups. In addition, no major access-related complications such as grade 5 hematoma, necessity for amputation or surgery were occurred (Table 2). Comparing the minor complications indicated that there was not significant differences in paresthesia/pain and hematoma ( $P = 0.948$  and  $P = 0.893$ , respectively) (Table 2). Local pain and/or paresthesia was treated with analgesic (ibuprofen or steroid). Local hematoma was controlled with compression bandage and ice bag. All hematomas were grade 1-3, except 1 patient in transulnar group who developed to grade 4. All hematomas were controlled with the above-mentioned conservative management. In contrast to the above, differences in arterial occlusion and artery spasm were significant between the two groups ( $P < 0.050$ ) (Table 2). Arterial occlusion was significantly higher in transradial approach (9.0% vs 1.0%,  $P = 0.006$ ), which was diagnosed by physical examination and documented by Doppler sonography (absent pulses). As there was no significant ischemia associated with this complication, no further treatment was performed. Arterial spasm was also significantly higher in transradial group (12.6% vs 1.9%,  $P = 0.002$ ) and was treated with systemic nitrate. No pseudoaneurysm was occurred in both groups.

Most of these complications were observed during the first week, while hematoma occurred in the first 24 hours.

Mean time of procedure (from arterial puncture till reaching to ascending aorta) was  $20 \pm 8$  and  $21 \pm 11$  minutes in transradial and transulnar approaches, respectively ( $P = 0.723$ ).

## Discussion

This study showed that both transradial and transulnar approaches are safe and feasible alternatives for femoral CAG and angioplasty regarding to the MACEs and access site complications. Regarding the difficulties with transradial approach including radial artery anatomic

variations and complications including RAO and spasm, ulnar artery contained positive aspects like less anatomic variations and larger artery size, preventing arterial spasm, which were the purpose and necessity of this study. The transulnar CAG safety and feasibility was shown in few recent studies;<sup>7-9</sup> although Hahalis et al. questioned the feasibility of transulnar approach in comparison to transradial approach. They found higher cross-over rates in transulnar approach in comparison to transradial procedure.<sup>10</sup> No MACEs or necessity for amputation and emergency surgery were observed in the present study as shown previously in similar ones.<sup>6-9</sup> Considering minor complications (transulnar approach), pain and/or paresthesia was complained by 11.4% of the patients in the present study; this rate is close to the result of the study by Roghani-Dehkordi et al. as 11.0%,<sup>7</sup> or even lower than the rate reported by Sallam et al. as 15.5%.<sup>14</sup> This variation may be related to the sensitivity of the patient and/or population to the pain and also somehow to the accuracy of the observer to pick out this complication. However, it should be emphasized that puncturing by the skilled individuals and decreasing puncture time as low as possible will decrease pain/paresthesia. Hematoma (not life and limb threatening) was occurred in 10.5% of the patients participating in this study with transulnar approach, this is in agreement with other studies.<sup>7-12</sup> Spasm was significantly higher in transradial approach compared to transulnar approach with 12.6% and 1.9%, respectively as shown in other studies, for instance the studies carried out by Hahalis et al.<sup>10</sup> and Louvard and Lefevre.<sup>15</sup> This may be related to smaller size of radial artery and also its tortuosity causing prone it to spasm. Decreasing puncture time, flushing with cocktail (including nitrate and/or verapamil) and gentle handling of wire and catheter decrease arterial spasm.<sup>16</sup> In the present study, RAO was significantly more than ulnar artery occlusion with 9.0% and 1.0%, respectively. Several studies also showed similar values.<sup>7,13,17</sup> Lower rate of ulnar artery

occlusion most probably results from higher size of ulnar artery, and also deep location of ulnar artery which inhibited complete occlusion of artery during hemostasis in comparison to the radial approach.<sup>10,14</sup>

### Conclusion

As shown in the present study, transulnar CAG was safe and feasible as transradial approach regarding to MACEs and vascular (access site) complications. However, minor complications like RAO and artery spasm were more common in transradial approach.

### Acknowledgments

This study has been derived from a thesis registered with the number 1586.

### Conflict of Interests

Authors have no conflict of interests.

### References

1. Bruschke AV, Sheldon WC, Shirey EK, Proudfit WL. A half century of selective coronary arteriography. *J Am Coll Cardiol* 2009; 54(23): 2139-44.
2. Sadeghi M, Sarrafzadegan N, Shahabi J, Hedayat P. The five-year trend of coronary artery diseases based on angiography results in central part of Iran. *Iran Heart J* 2018; 13(2): 12-9.
3. Alvarez-Tostado JA, Moise MA, Bena JF, Pavkov ML, Greenberg RK, Clair DG, et al. The brachial artery: A critical access for endovascular procedures. *J Vasc Surg* 2009; 49(2): 378-85.
4. Lotan C, Hasin Y, Mosseri M, Rozenman Y, Admon D, Nassar H, et al. Transradial approach for coronary angiography and angioplasty. *Am J Cardiol* 1995; 76(3): 164-7.
5. Mann T, Cowper PA, Peterson ED, Cubeddu G, Bowen J, Giron L, et al. Transradial coronary stenting: Comparison with femoral access closed with an arterial suture device. *Catheter Cardiovasc Interv* 2000; 49(2): 150-6.
6. Dashkoff N, Dashkoff PB, Zizzi JA Sr, Wadhvani J, Zizzi JA Jr. Ulnar artery cannulation for coronary angiography and percutaneous coronary intervention: Case reports and anatomic considerations. *Catheter Cardiovasc Interv* 2002; 55(1): 93-6.
7. Roghani-Dehkordi F, Hadizadeh M, Hadizadeh F. Percutaneous trans-ulnar artery approach for coronary angiography and angioplasty; A case series study. *ARYA Atheroscler* 2015; 11(5): 305-9.
8. Layton KF, Kallmes DF, Kaufmann TJ. Use of the ulnar artery as an alternative access site for cerebral angiography. *AJNR Am J Neuroradiol* 2006; 27(10): 2073-4.
9. Terashima M, Meguro T, Takeda H, Endoh N, Ito Y, Mitsuoka M, et al. Percutaneous ulnar artery approach for coronary angiography: A preliminary report in nine patients. *Catheter Cardiovasc Interv* 2001; 53(3): 410-4.
10. Hahalis G, Tsigkas G, Xanthopoulou I, Deftereos S, Ziakas A, Raisakis K, et al. Transulnar compared with transradial artery approach as a default strategy for coronary procedures: A randomized trial. The Transulnar or Transradial Instead of Coronary Transfemoral Angiographies Study (the AURA of ARTEMIS Study). *Circ Cardiovasc Interv* 2013; 6(3): 252-61.
11. Roghani F, Shirani B, Hashemifard O. The effect of low dose versus standard dose of arterial heparin on vascular complications following transradial coronary angiography: Randomized controlled clinical trial. *ARYA Atheroscler* 2016; 12(1): 10-7.
12. Bertrand OF, Larose E, Rodes-Cabau J, Gleeton O, Taillon I, Roy L, et al. Incidence, predictors, and clinical impact of bleeding after transradial coronary stenting and maximal antiplatelet therapy. *Am Heart J* 2009; 157(1): 164-9.
13. Bertrand OF, De Larochelliere R, Rodes-Cabau J, Proulx G, Gleeton O, Nguyen CM, et al. A randomized study comparing same-day home discharge and abciximab bolus only to overnight hospitalization and abciximab bolus and infusion after transradial coronary stent implantation. *Circulation* 2006; 114(24): 2636-43.
14. Sallam M, Al-Riyami A, Misbah M, Al-Sukaiti R, Al-Alawi A, Al-Wahaibi A. Procedural and clinical utility of transulnar approach for coronary procedures following failure of radial route: Single centre experience. *J Saudi Heart Assoc* 2014; 26(3): 138-44.
15. Louvard Y, Lefevre T. Loops and transradial approach in coronary diagnosis and intervention. *Catheter Cardiovasc Interv* 2000; 51(2): 250-2.
16. Salim A, Ahsan SA, Siddique A, Banerjee SK, Rahman F, Ahmed CM, et al. Initial experience of coronary angiogram through trans ulnar route in Bangabandhu Sheikh Mujib Medical University. *University Heart Journal* 2013; 9(2): 80-2.
17. Kiemeneij F, Laarman GJ. Percutaneous transradial artery approach for coronary stent implantation. *Cathet Cardiovasc Diagn* 1993; 30(2): 173-8.

**How to cite this article:** Roghani-Dehkordi F, Mansouri R, Khosravi A, Mahaki B, Akbarzadeh M, Kermani-Alghoraishi M. **Transulnar versus transradial approach for coronary angiography and angioplasty: Considering their complications.** *ARYA Atheroscler* 2018; 14(3): 128-31.

## Physicians' knowledge, attitudes, and practice for hypertension management: A cross-sectional study in Hormozgan province, Iran

Hossein Farshidi<sup>(1)</sup>, Marzieh Nikparvar<sup>(1)</sup>, Iran Rostami-Qeshmi<sup>(2)</sup>, Roghaieh Ezzati-Rad<sup>(3)</sup>,  
Afsoon Piroozan<sup>(4)</sup>, Elham Boushehri<sup>(5)</sup>

### Original Article

#### Abstract

**BACKGROUND:** Hypertension is a common risk factor for developing cardiovascular, brain, and kidney disorders; and today, it affects about one billion people worldwide. Insufficient clinical knowledge of the practitioners and family physicians and not following the guidelines has led to the improper control of hypertension. This study intended to investigate the knowledge, attitude, and practice of general practitioners (GPs) about hypertension in Hormozgan province, Iran.

**METHODS:** This cross-sectional study used consecutive sampling method. A three-part researcher-made questionnaire was used to collect data on demographic, attitude, knowledge, and practice information from 220 GPs working in Hormozgan province.

**RESULTS:** The mean and standard deviation (SD) of scores on knowledge, practice, and attitude of GPs about hypertension management were ( $5.00 \pm 0.50$ ), ( $10.00 \pm 0.02$ ) and ( $9.00 \pm 0.15$ ), respectively; which present a proper state. Attending training courses and increased work experience have statistically significant effects on the knowledge and attitude of GPs ( $P < 0.050$ ). The only exception was the area of practice, where there was no significant relationship between the practitioners' work experience and their practice ( $P = 0.266$ ).

**CONCLUSION:** The results of this study can be utilized by decision-makers and general medicine curriculum designers to plan effective training courses for medical graduates to be used in clinical settings for health promotions.

**Keywords:** Hypertension, Attitude, Knowledge, Practice, General Practitioner

*Date of submission:* 20 Aug. 2017, *Date of acceptance:* 23 Mar. 2018

#### Introduction

Hypertension is one of the most common risk factors for cardiovascular, brain, and kidney disorders. Unfortunately, it affects about one billion people worldwide. Hypertension directs attention to itself not only due to its prevalence but also down to the fact that it is asymptomatic, has diverse drugs and treatment procedures, requires long time drug therapy, and demands to be followed up by the medical staff.<sup>1,2</sup>

According to Joint. National Committee on Prevention, Detection, Evaluation, and Treatment of High Blood Pressure (JNC VII),<sup>3</sup> hypertension is defined as systolic blood pressure (BP) level above 140 mmHg and diastolic BP level of 90 mmHg,

under standard conditions. Therefore, the prevalence of hypertension varies slightly between societies; however, in most cases it is reported to be between 20% and 24% of the total population.<sup>3</sup> In Iran, its prevalence is reported to be between 22% and 24% among the people over 20 years of age.<sup>4</sup> Almost the same figure has been reported in Hormozgan province, Iran.<sup>5</sup>

The impact of hypertension treatment on the reduction of mortality rate has been long proved. Yet, the figures provided by different countries indicate insufficient control of BP levels (about 120 mmHg for systolic BP level and 80 mmHg for diastolic BP level). For instance, figures specify a 54% control rate in the United States (U.S.),<sup>6</sup> and

1- Associate Professor, Hormozgan Cardiovascular Research Center, Hormozgan University of Medical Sciences, Bandar Abbas, Iran

2- General Practitioner, Hormozgan Cardiovascular Research Center, Hormozgan University of Medical Sciences, Bandar Abbas, Iran

3- Hormozgan Cardiovascular Research Center AND Department of Health Education, Hormozgan University of Medical Sciences, Bandar Abbas, Iran

4- PhD Candidate, Hormozgan Cardiovascular Research Center AND Department of English Language, Hormozgan University of Medical Sciences, Bandar Abbas, Iran

5- Assistant Professor, Department of Medical Education, School of Health, Hormozgan University of Medical Sciences, Bandar Abbas, Iran

Correspondence to: Elham Boushehri, Email: [elhamboushehri@yahoo.com](mailto:elhamboushehri@yahoo.com)



about 50% in European countries;<sup>7</sup> in other areas such as Africa,<sup>8</sup> Middle East,<sup>9</sup> and China<sup>10</sup> figures point out even worse conditions.

One of the main factors for the proper control of hypertension is increasing the knowledge of general practitioners (GPs) and family physicians about their duties. A study in Italy revealed that not many physicians are informed enough to assess the risk factors associated with hypertension.<sup>11</sup> The same pattern was observed among physicians in Bahrain, in terms of treatment procedures. Another study conducted in Qazvin, Iran, presented that only 61% of the physicians ask for diagnostic tests during the first visit, and others cannot properly examine the patients.<sup>12</sup>

Considering the role of hypertension in the development of other chronic and deadly diseases, and the impact of knowledge, attitude, and practice of GPs, as the first step for health providing care, this study investigated the knowledge, attitude, and practice of GPs of Hormozgan province about hypertension. Obviously, the results of this study can be utilized by decision-makers and general medicine curriculum designers for the most effective training programs in the form of Continuous Medical Education (CME) for medical graduates to be used prospectively in clinical settings and for health promotions.

## Materials and Methods

This cross-sectional, descriptive-analytical study included 850 GPs working in Hormozgan province, with the mean and standard deviation (SD) of  $5.12 \pm 0.3$  years of work experience. The sample size was estimated as 300 individuals using Morgan table. Based on the total number of physicians in each city, through proportional sampling method, the sample of GPs was selected randomly from each city.

A three-part researcher-made questionnaire was used to collect data. Reliability and validity of questionnaire was checked and confirmed. First, a preliminary pool of 66 items was developed by a review of existing clinical knowledge related to hypertension management by GPs. These items encompassed three domains: knowledge, attitude, and practice (clinical scenarios). Second, the comprehensiveness, relevance, and clarity of these items were assessed by an expert panel composed of 2 cardiologists, 2 health educationists, and 1 epidemiologist. Based on their responses and comments, a modified pool of 40 items was developed by writing additional items, excluding

irrelevant items, and combining items. Thus, the questionnaire was made with three domains: attitude (10 questions), knowledge (15 questions), and practice (15 questions).

In order to investigate the reliability of the questionnaire, 15 senior medical interns and 10 GPs were asked to fill out the questionnaire twice with the interval of 10 days. The final reliability was confirmed through estimating Pearson correlation coefficient for each domain (knowledge domain's  $r = 0.74$ , attitude domain's  $r = 0.80$ , and practice domain's  $r = 0.89$ ). The process led to the displacement of 4 questions in the area of knowledge and awareness, as well as revising two questions in the area of attitude and practice.

Each participant had a chance to present his/her attitude choosing one of the choices of "Yes", "No Idea", and "No" which were graded from 0-2. The minimal and maximal grades on the attitude section were 0 and 20, respectively. The items investigating knowledge and practice were designed as multiple choice items. The obtained grades for the items on knowledge and practice ranged from 0-15.

The questionnaire was distributed among the participants through email, office automation system, and Telegram program. Of the 300 participants, 220 individuals (32% men and 68% women) completed the questionnaire, and 80 persons refused to participate in the study. The reason for the drop out of some of the participants was that 21 individuals moved to other cities before the end of the project, 27 ones did not participate due to their lack of time, and 32 others decided not to take part in the research project for no known reason.

Continuous and categorical data were reported as mean  $\pm$  SD and absolute number (percent), respectively. Independent t-test was applied in order to determine the statistically meaningful significance between the means of obtained knowledge, attitude, and practice questioning from different groups. In an attempt to determine the most significant influencing factor on the three areas under research, multiple regression test was applied. The statistically meaningful significance was considered less than 0.05 for all the tests. The collected data were analyzed utilizing SPSS software (version 20, IBM Corporation, Armonk, NY, USA).

## Results

The mean and SD of GPs' scores in the areas of attitude, knowledge, and practice on hypertension were  $5.00 \pm 0.50$ ,  $10.00 \pm 0.02$  and  $9.00 \pm 0.15$ , respectively.



**Table 1.** The mean and standard deviation of general practitioners' scores in the areas of attitude, knowledge, and practice, in terms of gender

| Areas     | Gender | n (%)    | Mean ± SD    | P*    |
|-----------|--------|----------|--------------|-------|
| Attitude  | Women  | 70 (32)  | 4.50 ± 0.50  | 0.098 |
|           | Men    | 150 (68) | 4.82 ± 0.50  |       |
| Knowledge | Women  | 70 (32)  | 10.20 ± 0.02 | 0.083 |
|           | Men    | 150 (68) | 11.00 ± 0.02 |       |
| Practice  | Women  | 70 (32)  | 8.50 ± 0.25  | 0.332 |
|           | Men    | 150 (68) | 8.20 ± 0.10  |       |

\* Used independent t-test; SD: Standard deviation

The mean and SD of GPs' scores in the areas of attitude, knowledge and practice on hypertension, based on their gender, history of attending training courses, and work experience are presented in tables 1, 2, and 3, respectively. Accordingly, no relation between GPs' scores in the areas of attitude, knowledge, and practice on hypertension and gender was found (Table 1). History of attending training courses during the last two years had positive meaningful effects on the knowledge and attitude of GPs ( $P = 0.003$  and  $0.005$ , respectively) (Table 2). Table 3 shows that work experience has also positive meaningful effects on the knowledge and attitude of GPs ( $P = 0.003$  and  $0.001$ , respectively). However, the history of attending training courses and work experience have no effect on the practitioners' practice ( $P = 0.266$  and  $0.332$ , respectively).

Multiple regression analysis was also used to determine the most important factor affecting the attitude, knowledge, and practice of GPs. In this sense, the relationships between obtained scores in each of the three areas were investigated separately and the relationships between the dependent variable and other factors such as work experience, history of the last training course, and gender were also investigated. The results are presented in table 4.

Table 4 shows the relationship between the attitude, knowledge, and practice of GPs with their gender, work experience, and history of attending training courses. Gender and work experience have

not significant relationship with attitude, knowledge, and practice ( $P > 0.050$ ). However, having passed courses in increasing attitude in hypertension has significant relationship with increasing attitude ( $\beta = 0.420$ ,  $P = 0.017$ ). Similarly, having passed course in increasing knowledge and practice for controlling hypertension has significant relationship with posttest knowledge and practice ( $P = 0.018$ ,  $P = 0.021$ , respectively).

## Discussion

Nowadays, due to significant medical advances, especially in the areas of medication and surgical interventions, a majority of diseases have become treatable or their incidence rates have decreased. Hypertension, unfortunately, has been an exception and is not appropriately controlled worldwide. In European, American, and some Asian countries, hypertension control rates are to some extent acceptable;<sup>13,14</sup> however, undesirable figures have been reported in other countries.<sup>15-17</sup> In some cities of Iran, Isfahan for instance, there has been continuous community plans with convincing results aiming at controlling hypertension through the enhancement of individuals' awareness and knowledge.<sup>18</sup>

Factors such as long-term medication use, medication complications, high treatment costs, unhealthy lifestyles, occupational and familial stress, alcohol use, and smoking have made hypertension difficult to control. During the process of

**Table 2.** The mean and standard deviation of general practitioners' scores in the areas of attitude, knowledge, and practice, in terms of history of attending training courses in the last two years

| Areas     | History of attending related continuous medical education courses in the last two years | n (%)    | Mean ± SD    | P*    |
|-----------|---|----------|--------------|-------|
| Attitude  | Positive  | 125 (56) | 5.50 ± 0.05  | 0.005 |
|           | Negative  | 95 (43)  | 4.12 ± 0.50  |       |
| Knowledge | Positive  | 125 (56) | 11.20 ± 0.24 | 0.003 |
|           | Negative  | 95 (43)  | 9.00 ± 0.32  |       |
| Practice  | Positive  | 125 (56) | 8.50 ± 0.25  | 0.266 |
|           | Negative  | 95 (43)  | 8.20 ± 0.10  |       |

\* Used independent t-test; SD: Standard deviation

**Table 3.** The mean and standard deviation of general practitioners' scores in the areas of attitude, knowledge, and practice in terms of work experience

| Areas     | Work experience (year) | n (%)    | Mean $\pm$ SD    | P*    |
|-----------|------------------------|----------|------------------|-------|
| Attitude  | $\leq 3$               | 106 (48) | 4.20 $\pm$ 0.05  | 0.001 |
|           | $> 3$                  | 114 (52) | 5.82 $\pm$ 1.50  |       |
| Knowledge | $\leq 3$               | 106 (48) | 10.10 $\pm$ 0.13 | 0.003 |
|           | $> 3$                  | 114 (52) | 11.00 $\pm$ 1.12 |       |
| Practice  | $\leq 3$               | 106 (48) | 9.50 $\pm$ 1.55  | 0.563 |
|           | $> 3$                  | 114 (52) | 8.12 $\pm$ 1.11  |       |

\* Used independent t-test; SD: Standard deviation

hypertension diagnosis and treatment, medical personnel who are mostly GPs constitute the main element.<sup>2</sup> Therefore, their medical awareness, appropriate communication skills with the patients, and sufficient knowledge of the disease are essential for hypertension control.

The present study investigated the mean score of GPs' knowledge about various aspects of prevention, diagnosis, and treatment of hypertension which showed undesirable results. The reason could be explained through poor levels of work experience and not having attended any training courses. The same finding was observed in some other studies<sup>16,17</sup> in different parts of the world as well.

In addition, the mean score of GPs' practice measured based on the evaluation of 15 written clinical scenarios related to hypertension which examined various diagnostic and therapeutic aspects of practitioners' work, was 0.15 and had no significant relationship with their work experience.<sup>9</sup> This finding suggests that the need for updating knowledge has not been properly institutionalized among GPs. Meanwhile, some physicians in their written comments expressed lack of proper communication between provincial health centers, health departments, and healthcare networks with physicians who are directly in contact with patients.

For example, more than half of the physicians stated that they had never received any hypertension treatment guideline approved by the Ministry of Health and Medical Education, or declared their unawareness of the existence of such guidelines.

In a somewhat similar study, the same results as those of the present study were achieved. A cross-sectional study was conducted on 1000 GPs in urban areas of Pakistan. Thirty six percent of the GPs used an improper classification to diagnose hypertension among patients less than 60 years of age and those over 60 years old. Out of the whole participants, 34.7% performed good practices for hypertension treatment for the elderly patients.<sup>17</sup>

Moreover, in another study conducted in Shanghai, the knowledge and practice of 160 GPs on hypertension was studied. The findings indicated poor levels of knowledge and practice of the urban physicians on hypertension; thus, the study revealed an urgent need for conducting continuous education courses on high BP levels.<sup>16</sup>

A retrospective study, the results of which were consistent with the present study, was conducted in 15 health centers in Bahrain. 115 GPs (including 77 family physicians and 38 general physicians) participated in the study who accounted for 74% of all GPs in Bahrain. In general, 1266 diabetic patients with high BP levels were examined.

**Table 4.** The relationship between the attitude, knowledge, and practice of general practitioners with their gender, work experience, and history of attending training courses

| Dependent Variables | Independent Variables  | $\beta$ | SE ( $\beta$ ) | P*    |
|---------------------|--|---------|----------------|-------|
| Attitude            | Gender (reference category: women)                                       | 0.040   | 0.020          | 0.123 |
|                     | History of attending training courses (reference category: no attending) | 0.420   | 0.380          | 0.017 |
|                     | Work experience (year)   | 0.040   | 0.010          | 0.189 |
| Knowledge           | Gender (reference category: women)                                       | 0.030   | 0.010          | 0.117 |
|                     | History of attending training courses (reference category: no attending) | 0.490   | 0.360          | 0.018 |
|                     | Work experience (year)   | 0.030   | 0.010          | 0.082 |
| Practice            | Gender (reference category: women)                                       | 0.090   | 0.010          | 0.160 |
|                     | History of attending training courses (reference category: no attending) | 0.390   | 0.300          | 0.021 |
|                     | Work experience (year)   | 0.040   | 0.020          | 0.205 |

SE: Standard error

The most common drugs included angiotensin converting enzyme (ACE) inhibitors (37.9%) and beta-blockers (38.3%). Calcium channel blockers were prescribed by one-third of physicians; and generally, a significant number of physicians prescribed drugs without reviewing available standard guidelines.<sup>19</sup> This is worth mentioning that in the study from Bahrain, a checklist was handed out to the physicians to assess their pharmaceutical choice from a list of related drugs and their contraindications.

Another consistent study was performed in Egypt to evaluate the knowledge and practice of primary health care (PHC) physicians for the identification and treatment of hypertension and other risk factors of cardiovascular diseases (CVDs). The study included a four-part questionnaire, an interview for each physician, and a checklist of their daily activities. Based on the results, dealing with hypertension was a primary problem for two-thirds (62.9%) of the physicians and only 19% had the relevant guideline. The level of knowledge of physicians in different areas was evaluated as follows: regarding the definition of BP (61.3%: good), measurement method (43.5%: poor), referral cases (43.5%: poor), consultation with patients (61.3%: good) and effectiveness of treatment methods (59.8%: good).<sup>20</sup>

In another study conducted in 47 health centers in Spain with an intention of determining the extent of disease control, BP levels of 4049 patients were measured. Forty two percent of the patients had a desirable BP (140/90). Thirteen percent of the diabetic patients and seventeen percent of renal patients had a desirable BP (130/80).<sup>21</sup>

Another study was conducted in the U.S. to evaluate the knowledge, attitude, and practice of 10000 cardiologists, internal medicine specialists, and GPs in the area of patients with hypertension. Emails were sent to the physicians and 1023 of them sent back their answers. Only 37.3% of them answered to all the four questions of knowledge correctly, where cardiologists acquired the highest scores.<sup>22</sup>

A cross-sectional study was conducted in Fars province, Iran, to evaluate the knowledge, attitude, and practice of 300 GPs in the area of treatment and complications of high BP levels, which revealed that 99% of the physicians believed in the importance of hypertension as a public health condition, 12% requested proper tests, and 20% properly controlled patients. Only 45% of the GPs had measured their own BP the same year. Based on the findings, the physicians' improper attitude

toward the significance of the disorder was reported;<sup>23</sup> therefore, the same results as those of the present study were achieved.

A cross-sectional study was conducted in Saudi Arabia to evaluate the compliance of treatment methods used by GPs with hypertension treatment guidelines. In this study, the need for conducting continuous education courses, on the basis of available guidelines, for GPs was proposed.<sup>24</sup>

In an intervention study in Italy, it was shown that increasing the knowledge of GPs about available guidelines was associated with an increase in controlling BP levels.<sup>25</sup>

In two intervention studies conducted in Pakistan and Spain, results showed that an increase in the knowledge of GPs could be effective in controlling BP levels.<sup>26,27</sup> Over a six-year period of community interventions through 10 research projects which were carried out in Isfahan, it was detected that the extent of awareness and disease control had increased compared with other parts of the country that did not gain any interventions.<sup>18</sup>

One of the main findings of this study is the physicians' improper attitude toward treatment and disease control which reduces their tendency for self-promotions through attending training courses.<sup>27-30</sup> The physicians' attitude and willingness for participation in training courses have also been evaluated in Qazvin, Iran.<sup>12</sup>

In the present study, no significant difference was observed in the levels of attitude of GPs with higher work experience, compared to those with lower work experience. On the other hand, an improvement was observed in the attitude of those with a history of attending retraining courses. This issue highlights the important role of retraining courses in the improvement of attitude of physicians for the diagnosis, treatment, and prevention of hypertension, and can be considered as the first step toward treating the disease.

The limitation of this study include: no question was designed to determine the alternative guideline used by the physicians once they complain of the inaccessibility of the treatment guideline provided by the Ministry of Health. Due to the prolonged process of data collection, the researchers did not manage to substitute more participants for the ones who had dropped out. This might have influenced processing the data and in turn the findings.

## Conclusion

The results of this study highlight the improvements in all areas of knowledge, attitude,

and practice of physicians, after attending retraining educational courses. Providing guidelines and holding regional workshops and seminars on the utilization of the guidelines will improve physician's practice. In Iran's vast healthcare network, GPs are among the first levels of communication; therefore, it is suggested to organize retraining courses to upgrade their levels of knowledge, skills, and attitudes, and to consider BP control as a priority in the Ministry of Health.

### Acknowledgments

None.

### Conflict of Interests

Authors have no conflict of interests.

### References

1. Kearney PM, Whelton M, Reynolds K, Muntner P, Whelton PK, He J. Global burden of hypertension: Analysis of worldwide data. *Lancet* 2005; 365(9455): 217-23.
2. Go AS, Mozaffarian D, Roger VL, Benjamin EJ, Berry JD, Borden WB, et al. Heart disease and stroke statistics--2013 update: A report from the American Heart Association. *Circulation* 2013; 127(1): e6-e245.
3. Chobanian AV, Bakris GL, Black HR, Cushman WC, Green LA, Izzo JL Jr, et al. The seventh report of the joint national committee on prevention, detection, evaluation, and treatment of high blood pressure: The JNC 7 report. *JAMA* 2003; 289(19): 2560-72.
4. Noohi F, Sarrafzadegan N, Khosravi A, Andalib E. The first Iranian recommendations on prevention, evaluation and management of high blood pressure. *ARYA Atheroscler* 2012; 8(3): 97-118.
5. Farshidi H, Zare SH, Boushehri E. Association between blood pressure changes and obesity in over-18 population of Bandar Abbas. *Hormozgan Med J* 2006; 10(2): 111-8.
6. Howard G, Prineas R, Moy C, Cushman M, Kellum M, Temple E, et al. Racial and geographic differences in awareness, treatment, and control of hypertension: The Reasons for geographic and racial differences in stroke study. *Stroke* 2006; 37(5): 1171-8.
7. Wolf-Maier K, Cooper RS, Banegas JR, Giampaoli S, Hense HW, Joffres M, et al. Hypertension prevalence and blood pressure levels in 6 European countries, Canada, and the United States. *JAMA* 2003; 289(18): 2363-9.
8. Agyemang C, Bhopal R. Is the blood pressure of people from African origin adults in the UK higher or lower than that in European origin white people? A review of cross-sectional data. *J Hum Hypertens* 2003; 17(8): 523-34.
9. Li H, Meng Q, Sun X, Salter A, Briggs NE, Hiller JE. Prevalence, awareness, treatment, and control of hypertension in rural China: Results from Shandong Province. *J Hypertens* 2010; 28(3): 432-8.
10. Braunwald E. Heart disease: A textbook of cardiovascular medicine. Philadelphia, PA: Saunders; 1997.
11. Celentano A, Panico S, Palmieri V, Guillaro B, Brancati C, Di Palma Esposito N, et al. Citizens and family doctors facing awareness and management of traditional cardiovascular risk factors: Results from the Global Cardiovascular Risk Reduction Project (Help Your Heart Stay Young Study). *Nutr Metab Cardiovasc Dis* 2003; 13(4): 211-7.
12. Javadi H, Barikani A, Jalilolghadr S. Evaluation of Qazvin general practitioners' attitude on hypertension. *J Qazvin Univ Med Sci* 2005; 8(4): 53-8. [In Persian].
13. World Health Organization. Global atlas on cardiovascular disease prevention and control. Geneva, Switzerland: WHO; 2011.
14. Noohi F, Sarrafzadegan N, Khosravi A, Andalib E; First Recommendation on High Blood Pressure Working Group. The first Iranian recommendations on prevention, evaluation and management of high blood pressure. *ARYA Atheroscler* 2012; 8(3): 97-118.
15. Azizi F, Rahmani M, Madjid M, Allahverdi S, Ghanbili J, Ghanbarian A, et al. Serum lipid levels in an Iranian population of children and adolescents: Tehran lipid and glucose study. *Eur J Epidemiol* 2001; 17(3): 281-8.
16. Chen Q, Zhang X, Gu J, Wang T, Zhang Y, Zhu S. General practitioners' hypertension knowledge and training needs: A survey in Xuhui district, Shanghai. *BMC Fam Pract* 2013; 14: 16.
17. Jafar TH, Jessani S, Jafary FH, Ishaq M, Orakzai R, Orakzai S, et al. General practitioners' approach to hypertension in urban Pakistan: Disturbing trends in practice. *Circulation* 2005; 111(10): 1278-83.
18. Khosravi A, Mehr GK, Kelishadi R, Shirani S, Gharipour M, Tavassoli A, et al. The impact of a 6-year comprehensive community trial on the awareness, treatment and control rates of hypertension in Iran: Experiences from the Isfahan healthy heart program. *BMC Cardiovasc Disord* 2010; 10: 61.
19. Al Khaja KA, Sequeira RP, Mathur VS, Damanhori AH, Abdul Wahab AW. Family physicians' and general practitioners' approaches to drug management of diabetic hypertension in primary care. *J Eval Clin Pract* 2002; 8(1): 19-30.
20. Abolfotouh MA, Soliman LA, Abolfotouh SM, Raafat M. Knowledge and Practice of PHC Physicians toward the Detection and Management

- of Hypertension and Other CVD Risk Factors in Egypt. *Int J Hypertens* 2011; 2011: 983869.
21. Banegas JR, Segura J, Ruilope LM, Luque M, Garcia-Robles R, Campo C, et al. Blood pressure control and physician management of hypertension in hospital hypertension units in Spain. *Hypertension* 2004; 43(6): 1338-44.
  22. Huse DM, Roht LH, Alpert JS, Hartz SC. Physicians' knowledge, attitudes, and practice of pharmacologic treatment of hypertension. *Ann Pharmacother* 2001; 35(10): 1173-9.
  23. Zibaeenezhad MJ, Babae H, Vakili SH. Knowledge, attitude and practice of general physicians in treatment and complications of hypertension in Fars province, southern Iran. *Iran Red Crescent Med J* 2007; 9(1): 4-8.
  24. Al-Gelban KS, Khan MY, Al-Khalidi YM, Mahfouz AA, Abdelmoneim I, Daffalla A, et al. Adherence of primary health care physicians to hypertension management guidelines in the Aseer region of Saudi Arabia. *Saudi J Kidney Dis Transpl* 2011; 22(5): 941-8.
  25. Grandi AM, Maresca AM, Sessa A, Stella R, Ponti D, Barlocco E, et al. Longitudinal study on hypertension control in primary care: The Insubria study. *Am J Hypertens* 2006; 19(2): 140-5.
  26. Jafar TH, Islam M, Bux R, Poulter N, Hatcher J, Chaturvedi N, et al. Cost-effectiveness of community-based strategies for blood pressure control in a low-income developing country: Findings from a cluster-randomized, factorial-controlled trial. *Circulation* 2011; 124(15): 1615-25.
  27. Banegas JR, Lundelin K, de la Figuera M, de la Cruz JJ, Graciani A, Rodriguez-Artalejo F, et al. Physician perception of blood pressure control and treatment behavior in high-risk hypertensive patients: A cross-sectional study. *PLoS One* 2011; 6(9): e24569.
  28. Cabana MD, Rand CS, Powe NR, Wu AW, Wilson MH, Abboud PA, et al. Why don't physicians follow clinical practice guidelines? A framework for improvement. *JAMA* 1999; 282(15): 1458-65.
  29. Wahner-Roedler DL, Vincent A, Elkin PL, Loehrer LL, Cha SS, Bauer BA. Physicians' attitudes toward complementary and alternative medicine and their knowledge of specific therapies: A survey at an academic medical center. *Evid Based Complement Alternat Med* 2006; 3(4): 495-501.
  30. Tasdemir Z, Alkan BA. Knowledge of medical doctors in Turkey about the relationship between periodontal disease and systemic health. *Braz Oral Res* 2015; 29: 55.

**How to cite this article:** Farshidi H, Nikparvar M, Rostami-Qeshmi I, Ezzati-Rad R, Piroozan A Boushehri E. **Physicians' knowledge, attitudes, and practice for hypertension management: A cross-sectional study in Hormozgan province, Iran.** *ARYA Atheroscler* 2018; 14(3): 132-8.



## Gerbode type defect after trans-septal puncture for ablation of left-sided accessory pathway

Masoud Eslami<sup>(1)</sup>, Reza Mollazadeh<sup>(2)</sup>, Roya Sattarzadeh-Badkoubeh<sup>(2)</sup>

### Case Report

#### Abstract

**BACKGROUND:** Trans-septal puncture (TSP) is a safe and effective method to approach left atrium and ventricle. Nowadays, cardiac electrophysiologists perform this procedure routinely to treat left-sided arrhythmias.

**CASE REPORT:** A 45-year-old man was referred to our center due to Wolff-Parkinson-White (WPW) syndrome. After trans-septal puncture, contrast injection into the sheath showed that it was in the left ventricle (LV) rather than left atrium. Trans-esophageal echocardiography confirmed left ventricle outflow tract to right atrial (RA) jet. Follow-up echocardiography showed that the tract was present up to 18 months, but considering that the patient was asymptomatic, endovascular or surgical closure was not done.

**CONCLUSION:** Our case with an 18-month follow-up period, highlights the conservative approach in asymptomatic patients with this complication.

**Keywords:** Radiofrequency Catheter Ablation, Adverse Effects, Punctures

*Date of submission:* 20 Aug. 2017, *Date of acceptance:* 05 Feb. 2018

#### Introduction

Trans-septal puncture (TSP) is a safe and effective method to approach left atrium and ventricle. Nowadays, cardiac electrophysiologists perform this procedure routinely to treat left sided arrhythmias.<sup>1</sup> Although pericardial effusion and tamponade are among the most serious complications of TSP,<sup>2</sup> complications such as inadvertent puncture of aorta, and even aorto-right atrial shunt are rarely reported.<sup>3,4</sup>

Herein, we illustrate the occurrence of a rare TSP complication, and our approach to handle it.

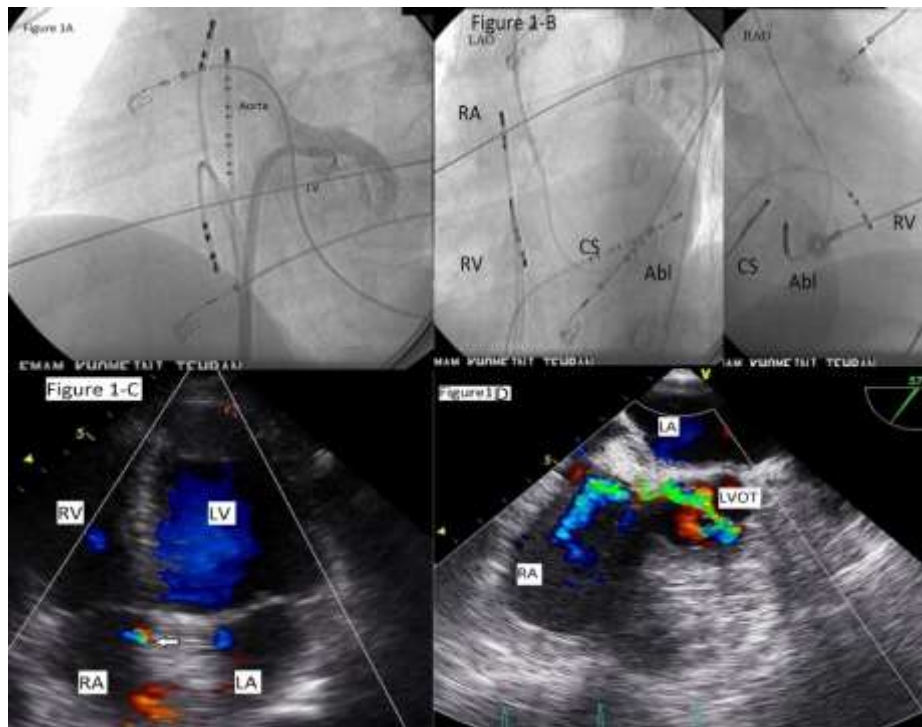
#### Case Report

A 45-year-old man was referred to our center due to Wolff-Parkinson-White (WPW) syndrome for radiofrequency ablation. General physical examination was normal. Electrocardiography (ECG) showed pre-excitation in favor of left posterior accessory pathway (AP). Echocardiography was also normal.

Guided by fluoroscopy, right atrium (RA), right ventricle, and coronary sinus catheters were introduced into the corresponding heart chambers. Basic electrophysiology study confirmed that AP was located in the posterior part of mitral valve ring; so we decided for TSP. This was the first time

we used HeartSpan Steerable (Merit Medical Systems, South Jordan, UT, United States) sheath and the needle for TSP; in the previous TSP procedures, we used the Agilis™ sheath (Abbott, Saint Paul, MN, United States). Withdrawal of trans-septal sheath from superior vena cava into RA after 2 jumps usually places the introducer system in the fossa ovalis; but in this patient, this maneuver did not work despite several attempts. Finally, we could place the sheath into lower part of the interatrial septum, just above coronary sinus catheter in left anterior oblique projection. Jerky puncture with the needle was done and small amount of contrast injection showed that the needle has traversed the interatrial septum. So, we advanced the steerable sheath over the needle to the left side, and then the needle was withdrawn. However, to our surprise, contrast injection into the side branch of the sheath showed that it was in the left ventricle (LV) rather than the left atrium (Figure 1-A). We advanced the 0.032" guidewire through the sheath to LV, and retracted the sheath to RA. Continuous arterial blood pressure monitoring did not show hemodynamic compromise, nor did echocardiography show pericardial effusion; so we

1- Assistant Professor, Department of Cardiology, Imam Khomeini Hospital, Tehran University of Medical Sciences, Tehran, Iran  
2- Associate Professor, Department of Cardiology, Imam Khomeini Hospital, Tehran University of Medical Sciences, Tehran, Iran  
Correspondence to: Reza Mollazadeh, Email: [mollazar@yahoo.com](mailto:mollazar@yahoo.com)



**Figure 1.** A: Contrast injection after trans-septal puncture through the sheath shows that LV is penetrated. B: RAO and LAO projections at the site of successful ablation (posterior of mitral valve ring). C: TTE shows abnormal flow in the RA. D: TEE shows LV outflow tract to RA flow.

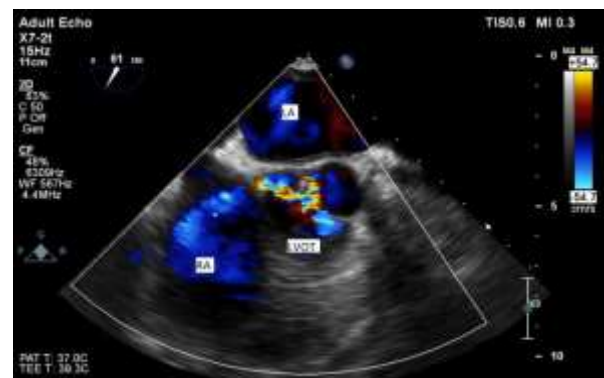
Abl: Ablation catheter; CS: Coronary sinus; LA: Left atrium; LAO: Left anterior oblique; LV: Left ventricle; RA: Right atrium; RAO: Right anterior oblique, RV: Right ventricle; TEE: Trans-esophageal echocardiography; TTE: Transthoracic and echocardiography

decided to perform radiofrequency ablation of AP via the retrograde trans-aortic approach that was successful (Figure 1-B).

We transferred the patient to coronary care unit (CCU) for better hemodynamic monitoring. On the next day, transthoracic and trans-esophageal echocardiography showed LV outflow tract to RA jet (Figure 1-C and 1-D respectively). The patient was discharged uneventfully. Follow-up echocardiography showed that the tract was present for up to 18 months without any evidence of cardiac enlargement (Figure 2). Since the patient was asymptomatic, endovascular or surgical closure was not attempted.

### Discussion

Our case is unique in two aspects; first, a very rare complication of TSP, RA to LV penetration (Gerbode) and fistula formation, but more interestingly is the second, persistence of this fistula over 18 months of medical follow-up without any intervention usually needed in similar symptomatic cases.<sup>5</sup>



**Figure 2.** Persistent LV to RA fistula 18 months later  
LA: Left atrium; LV: Left ventricle; RA: Right atrium; LVOT: Left ventricular outflow tract

Can et al. presented a case with Gerbode type defect after ablation of atrioventricular node from the LV to RA. They stated that radiofrequency ablation was uncomplicated and at 5-month routine medical follow up, they found a LV to RA fistula. At 14-month follow-up, the size of defect did not show any progression; so they did not perform any intervention.<sup>6</sup>

The most similar article to ours was presented by Chavarria and Goldberg.<sup>7</sup> They presented left ventricular penetration detected during trans-septal puncture of interatrial septum for ablation of left posterior accessory pathway. After discovering the complication in the catheterization laboratory, they postponed the definite procedure to another day. They addressed that the patient was asymptomatic during several weeks follow-up.

In our case, we speculated that the superior part of membranous septum was punctured inadvertently, and a Gerbode-like defect with flow from the LV to the RA was made. It is predictable that if intracardiac echocardiography was available in our electrophysiology laboratory, this complication could be avoided. Our case, with 18-month follow-up, highlights the conservative approach in asymptomatic patients with this complication.

### Acknowledgments

None.

### Conflict of Interests

Authors have no conflict of interests.

### References

1. De Ponti R, Zardini M, Storti C, Longobardi M, Salerno-Uriarte JA. Trans-septal catheterization for radiofrequency catheter ablation of cardiac arrhythmias. Results and safety of a simplified method. *Eur Heart J* 1998; 19(6): 943-50.
2. Katritsis GD, Siontis GC, Giazitzoglou E, Fragakis N, Katritsis DG. Complications of transseptal catheterization for different cardiac procedures. *Int J Cardiol* 2013; 168(6): 5352-4.
3. Tsang MY, Hagler DJ, Dearani JA, Rihal CS, Anavekar NS. Aorto-right atrial fistula: A rare complication of trans-septal puncture and catheter ablation for atrial fibrillation. *Eur Heart J Cardiovasc Imaging* 2014; 15(1): 115.
4. Claridge S, Kapetanakis S, Gill J, Rinaldi CA, Wright M. A rare complication from transseptal puncture-persistent aorto-right atrial shunt and puncture of noncoronary cusp of aortic valve. *Heart Rhythm* 2012; 9(12): 2089-90.
5. Abdi S, Momtahan M, Shafe O. Transcatheter closure of iatrogenic Gerbode defect with an Amplatzer duct occluder in a 23-year-old patient. *J Cardiol Cases* 2015; 12(2): 45-7.
6. Can I, Krueger K, Chandrashekar Y, Li JM, Dykoski R, Tholakanahalli VN. Images in cardiovascular medicine. Gerbode-type defect induced by catheter ablation of the atrioventricular node. *Circulation* 2009; 119(22): e553-e556.
7. Chavarria N, Goldberg S. Left ventricle penetration-A rare complication of transseptal puncture and catheter ablation for supraventricular tachycardia. *HeartRhythm Case Rep* 2015; 1(5): 382-3.

**How to cite this article:** Eslami M, Mollazadeh R, Sattarzadeh-Badkoubeh R. **Gerbode type defect after trans-septal puncture for ablation of left-sided accessory pathway.** *ARYA Atheroscler* 2018; 14(3): 139-41.

## Combined association of liver and renal injury by intra-aortic balloon pump malposition

Feridoun Sabzi<sup>(1)</sup>, Aghigheh Heidari<sup>(2)</sup>, Reza Faraji<sup>(1)</sup>

### Case Report

#### Abstract

**BACKGROUND:** We report an unusual visceral complication of intra-aortic balloon pump (IABP) due to the malpositioning of the catheter in the aorta.

**CASE REPORT:** A 55-year-old man with severe left ventricular dysfunction underwent coronary artery bypass grafting (CABG) with the preoperative use of an intra-aortic balloon pump. Postoperative course was complicated by renal and hepatic failure. The early occurrence of complications during 36 hours after operation exhibited a serious vascular complication. The combination of acute renal and hepatic failure led to the suspension to occlusive effect of intra-aortic balloon pump catheter on ostium of the aforementioned organs. The intra-aortic balloon pump was removed, and urine output immediately restored. Thereafter, daily stop dawn serum levels of aminotransferases were started, and became normal at the 10<sup>th</sup> day of operation.

**CONCLUSION:** This is an exceptional case that shows how intra-aortic balloon pump may be contributed to mechanical aortic side branches obstruction. A high index of suspicion is mandatory in the diagnosis of such bizarre complications.

**Keywords:** Liver, Ventricular Dysfunction, Coronary Artery Bypass

*Date of submission:* 05 Oct. 2017, *Date of acceptance:* 03 Mar. 2018

#### Introduction

The intra-aortic balloon pump (IABP) is a method of temporary mechanical circulatory support used in the management of candidates for cardiac surgery with following risk factors of refractory arrhythmia or angina, or congestive heart failure as the result of acute myocardial infarction or its complication (acute mitral regurgitation, post myocardial infarction ventricular septal defect), postcardiotomy stunning, or low cardiac output syndrome.<sup>1</sup>

We report an exceptional case of combined acute renal and hepatic injury resulting from both organ hypoperfusion caused by catheter low-lying or malpositioning of the IABP.

#### Case Report

A 55-year-old man, with severe left main coronary artery disease (CAD), and with short stature (150 cm height) and 76 kg weight, was referred to our center for coronary artery bypass grafting (CABG). The patient scheduled for off-pump CABG (OPCAB).

Due to unstable hemodynamic condition, an IABP catheter (Datascope, procure, state, dual lumen, 9.5F, 34 ml, Datascope Inc., Montreal, NJ,

United States) was inserted percutaneously through the right femoral artery, and was attached to the Datascope system via a console. Immediately after device insertion, with a counter pulsation and 100% augmentation, and a ratio of 1:1, the systolic blood pressure increased up to 90 mmHg, and urine output increased.

The patient underwent an OPCAB operation using conventional grafts such as the left internal thoracic artery and saphenous vein grafts. Following the extubation, urine output was decreased that managed by diuretic and fluid therapy. Although, laboratory examination showed abrupt increasing of the following test: blood urea nitrogen (BUN): 70 mg/dl, creatinine (CR): 1.6 mg/dl, aspartate transaminase (AST): 80 IU, alanine aminotransferase (ALT): 70 IU, and acetate dehydrogenase (LDH): 350 IU. AST, ALT, and LDH values elevated seriously to 1200, 3500, and 5500 IU, respectively. The BUN and creatinine also increased to 80 and 2.1 mg/dl, respectively. The mean elevation of total bilirubin was also noted (total bilirubin: 2.5 mg/dl).

The distension caused the failure of Doppler to

1- Kermanshah Cardiovascular Research Centre, Kermanshah University of Medical Sciences, Kermanshah, Iran

2- Department of Anesthesiology, School of Medicine, Kermanshah University of Medical Sciences, Kermanshah, Iran

Correspondence to: Reza Faraji, Email: r.faraji61@gmail.com



reveal the condition of portal and liver venous and arterial flow blood flow, but showed the reduction of renal arterial blood flow. However, in a thoracic X-ray catheter's tip was not detected, and an abdominal X-Ray showed that the balloon pump catheter's tip was displaced distally; uncovering of catheter dressing in right thigh revealed loosening of fixation suture of catheter to the skin in its correct position (Figure 1).



**Figure 1.** The displacement of catheter tip (black arrow)

The improper mismatching of the IABP catheter size with the patient length may be another possible cause of the liver, renal, and mesenteric arterial malperfusion in this specific case. After IABP removal, the patient urine output was abruptly increased on the following hours. Then, the liver function tests, including ALT, AST, LDH, total bilirubin, and prothrombin time continued to reduce, and recovered drastically at the 10<sup>th</sup> day of catheter removal; liver function tests returned to normal value at time of hospital discharge, too.

### Discussion

The use of the larger catheter and displacement of the catheter distally by the loosening of fixation suture may lead to other unwanted complications. The sole way to avoid the visceral ischemia is proper selection of catheter size to the patient's body mass index (BMI); but catheter-induced ischemia is still considered as an important factor in premature device removal in a huge number of subjects.<sup>2</sup> Displacement or improper location of the IABP device, however, may result in a reduction in the visceral blood supply. These exacerbating ischemia is poorly tolerated by these critically ill patients. However, we consider the proper location

of the proximal catheter tip at the lower or at the level of the aortic arch or in the lower aspect in the 2<sup>nd</sup> or 3<sup>rd</sup> intercostal space.

Sirbu et al. reported at least an important lower extremity complication in 38 of 509 patients, while visceral ischemia were reported in 4 cases.<sup>3</sup> In Mouloupoulos et al. report, the major vascular complication of IABP was poorly tolerated in these critically ill cases with a low cardiac output syndrome, and marginal respiratory renal reserve.<sup>4</sup> Kantrowitz et al. reported that a mismatch between the length of the aorta and the balloon could result in visceral arterial branch obliteration and abdominal ischemia.<sup>5</sup> Arafa et al. showed that inferior mesenteric artery obliteration radiologically occurred in 30% of patients with the use of a large size balloon catheter.<sup>6</sup> Gol et al. found that senile collapse and degeneration and shortening of the vertebral body height led to the shortening of the aortic long axis, which might be an important contributor to mismatch of balloon and aorta in elderly cases.<sup>7</sup>

In Creswell et al. study, by autopsy of patients with cardiac surgery, IABP insertion was an important risk factor for the occurrence of fatal visceral ischemia.<sup>8</sup> Aside from diastolic malperfusion, plaque debris emboli due to the mechanical effects of balloon on intra-luminal atherosclerotic plaque may be related to abdominal ischemia. However, the augmentation produced by a smaller balloon is less than that provided by normal-sized balloons; but in Creswell et al. study, this difference does not seem to be clinically important. They reported that preventive measure was a reduction of IABP assisting ratio from 1:1 to 1:3. The ischemic time was reduced simply by lagging the time interval, in which the device remained in an inflated phase.<sup>8</sup>

Seeing the inability to insert a catheter from femoral artery due to obstruction of aorto-iliac vessel, or to avoid complication related to balloon, it could be possible to insert the balloon surgically from ascending aorta proximally into the aortic arch. However, Creswell et al.<sup>8</sup> believed that this solution would be an undesirable alternative method in critically ill patients. No alternative way is presented for IABP insertion, because this approach may be associated with compromising of aortic arch vessels flow or aortic plaque embolization into cerebral arteries.

In Urban et al. study, by autopsy of patients with cardiac surgery, IABP insertion was an important risk factor for the occurrence of fatal visceral



ischemia.<sup>9</sup> Aside from diastolic malperfusion, plaque debris immobile due to the mechanical effects of balloon on intra-luminal atherosclerotic plaque may be related to abdominal ischemia.<sup>10</sup>

### Acknowledgments

The authors give their special thanks to Imam Ali Hospital, Kermanshah, Iran.

### Conflict of Interests

Authors have no conflict of interests.

### References

1. Baskett RJ, Ghali WA, Maitland A, Hirsch GM. The intraaortic balloon pump in cardiac surgery. *Ann Thorac Surg* 2002; 74(4): 1276-87.
2. Christenson JT, Cohen M, Ferguson JJ 3<sup>rd</sup>, Freedman RJ, Miller MF, Ohman EM, et al. Trends in intraaortic balloon counterpulsation complications and outcomes in cardiac surgery. *Ann Thorac Surg* 2002; 74(4): 1086-90.
3. Sirbu H, Busch T, Aleksic I, Friedrich M, Dalichau H. Ischaemic complications with intra-aortic balloon counter-pulsation: Incidence and management. *Cardiovasc Surg* 2000; 8(1): 66-71.
4. Mouloupoulos SD, Topaz S, Kolff WJ. Diastolic balloon pumping (with carbon dioxide) in the aorta-a mechanical assistance to the failing circulation. *Am Heart J* 1962; 63: 669-75.
5. Kantrowitz A, Tjonneland S, Freed PS, Phillips SJ, Butner AN, Sherman JL Jr. Initial clinical experience with intraaortic balloon pumping in cardiogenic shock. *JAMA* 1968; 203(2): 113-8.
6. Arafa OE, Pedersen TH, Svennevig JL, Fosse E, Geiran OR. Intraaortic balloon pump in open heart operations: 10-year follow-up with risk analysis. *Ann Thorac Surg* 1998; 65(3): 741-7.
7. Gol MK, Bayazit M, Emir M, Tasdemir O, Bayazit K. Vascular complications related to percutaneous insertion of intraaortic balloon pumps. *Ann Thorac Surg* 1994; 58(5): 1476-80.
8. Creswell LL, Rosenbloom M, Cox JL, Ferguson TB Sr, Kouchoukos NT, Spray TL, et al. Intraaortic balloon counterpulsation: Patterns of usage and outcome in cardiac surgery patients. *Ann Thorac Surg* 1992; 54(1): 11-8.
9. Urban PM, Freedman RJ, Ohman EM, Stone GW, Christenson JT, Cohen M, et al. In-hospital mortality associated with the use of intra-aortic balloon counterpulsation. *Am J Cardiol* 2004; 94(2): 181-5.
10. Nishida H, Koyanagi H, Abe T, Arai H, Hirayama H, Hirayama T, et al. Comparative study of five types of IABP balloons in terms of incidence of balloon rupture and other complications: A multi-institutional study. *Artif Organs* 1994; 18(10): 746-51.

**How to cite this article:** Sabzi F, Heidari A, Faraji R. Combined association of liver and renal injury by intra-aortic balloon pump malposition. *ARYA Atheroscler* 2018; 14(3): 142-4.

## The importance of screening sleep disorders in outpatient cardiac rehabilitation programs in Iran

Habibolah Khazaie<sup>(1)</sup>, Saeid Komasi<sup>(2)</sup>

### Letter to Editor

Date of submission: 29 Jan. 2018, Date of acceptance: 15 Mar. 2018

#### Dear Editor-in-Chief

Sleep is one of the essential needs that have a significant impact on the health of the community.<sup>1</sup> Although proper and comfortable sleep is needed for a healthy life, sleep disorders are among the common health problems that threaten the quality of life of the general and clinical population of various communities.<sup>2</sup> These disorders include insomnia, sleep-related breathing disorders (obstructive sleep apnea, central sleep apnea syndrome, and snoring), central disorders of hypersomnolence (narcolepsy and hypersomnia), circadian rhythm sleep-wake disorders, parasomnias, and sleep-related movement disorders. The prevalence of these disorders is 0.4-48 percent in the United States,<sup>3</sup> and 8.8-59.2 percent in the general population of Iran.<sup>2,4</sup> Meanwhile, only about 7% of the general population in Iran has good sleep hygiene,<sup>1</sup> and more than 27% of the community is in danger of developing some sleep disorders.<sup>5</sup>

Sleep disturbances are the causes of somatic and fatal illnesses such as cardiovascular diseases (CVDs).<sup>6</sup> According to recent reports, sleep disturbances are associated with CVDs risk factors,<sup>7</sup> and significantly increase the chance of developing cardiac events.<sup>6</sup> In addition, these disorders are common in 30-38 percent of patients with coronary artery disease (CAD), or chronic heart failure (CHF), and can lead to a decrease of 12-10 percent in ejection fraction.<sup>8</sup> On the other hand, sleep disturbances in patients with established CVDs have several serious consequences.<sup>6</sup> However, their treatment has a significant role in controlling cardiovascular risk factors such as obesity, diabetes, hypertension, dyslipidemia, metabolic malfunctions, and mortality due to CVDs.<sup>9</sup>

Despite the importance of the aforementioned issue, screening of sleep disorders is not a standard part of the protocol for outpatient cardiac

rehabilitation (CR) programs in Iran. Obviously, timely screening of these problems, along with other physical and psychosocial risk factors, can lead to a significant increase in peak oxygen consumption, maximal workload, and exercise capacity before starting aerobic exercise during CR.<sup>10</sup> Considering the above points and the acceptable effects of CR on physical and mental health,<sup>11-13</sup> we recommend that outpatient CR centers in Iran also add screening of sleep disorders to the routine assessment of the course. It is expected that timely referral of patients with sleep problems to an expert can reduce the potential risk of heart consequences, and increase the health outcomes of CR programs.

#### Acknowledgments

We appreciate the Clinical Research Development Center of Imam Reza Hospital, Kermanshah University of Medical Sciences, Kermanshah, Iran.

#### Conflict of Interests

Authors have no conflict of interests.

#### References

1. Khazaie H, Chehri A, Sadeghi K, Heydarpour F, Soleimani A, Rezaei Z. Sleep Hygiene pattern and behaviors and related factors among general population in west Of Iran. *Glob J Health Sci* 2016; 8(8): 53434.
2. Sepehrmanesh Z, Ahmadvand A, Ghoreishi F. PW01-111-Prevalence of insomnia in general population. *Eur Psychiatry* 2010; 25: 1524.
3. Ram S, Seirawan H, Kumar SK, Clark GT. Prevalence and impact of sleep disorders and sleep habits in the United States. *Sleep Breath* 2010; 14(1): 63-70.
4. Arshi S, Salmani M, Sadeghniaat-Haghighi K, Najafi A, Alavi S, Shamsipour M. Prevalence of

1- Sleep Disorders Research Center, Kermanshah University of Medical Sciences, Kermanshah, Iran

2- Clinical Research Development Center, Imam Reza Hospital AND Lifestyle Modification Research Center, Kermanshah University of Medical Sciences, Kermanshah, Iran

Correspondence to: Saeid Komasi, Email: [s\\_komasi63@yahoo.com](mailto:s_komasi63@yahoo.com)

- obstructive sleep apnea among adults in north-west of Iran. *Sleep Med* 2017; 40: e18.
5. Khazaie H, Najafi F, Rezaie L, Tahmasian M, Sepehry AA, Herth FJ. Prevalence of symptoms and risk of obstructive sleep apnea syndrome in the general population. *Arch Iran Med* 2011; 14(5): 335-8.
  6. Quan SF. Sleep disturbances and their relationship to cardiovascular disease. *Am J Lifestyle Med* 2009; 3(1 Suppl): 55s-9s.
  7. Shirani G, Morovati SP, Shamshiri AR, Nouri M, Givi NE, Farhadi M. Prevalence of cardiovascular disorders in Iranian patients suffering from obstructive sleep apnea. *J Dent (Tehran)* 2016; 13(3): 151-6.
  8. American College of Cardiology. Incidence and prevalence of sleep apnea in cardiovascular patients [Online]. [cited 2012]; Available from: URL: <http://www.acc.org/latest-in-cardiology/articles/2014/07/18/15/41/incidence-and-prevalence-of-sleep-apnea-in-cardiovascular-patients>
  9. Jean-Louis G, Zizi F, Clark LT, Brown CD, McFarlane SI. Obstructive sleep apnea and cardiovascular disease: Role of the metabolic syndrome and its components. *J Clin Sleep Med* 2008; 4(3): 261-72.
  10. Quadri F, Boni E, Pini L, Bottone D, Venturoli N, Corda L, et al. Exercise tolerance in obstructive sleep apnea-hypopnea (OSAH), before and after CPAP treatment: Effects of autonomic dysfunction improvement. *Respir Physiol Neurobiol* 2017; 236: 51-6.
  11. Sadeghi M, Khosravi-Broujeni H, Salehi-Abarghouei A, Heidari R, Masoumi G, Roohafza H. Effect of cardiac rehabilitation on inflammation: A systematic review and meta-analysis of controlled clinical trials. *ARYA Atheroscler* 2018; 14(2): 85-94.
  12. Komasi S, Saeidi M. What is role of sex and age differences in marital conflict and stress of patients under cardiac rehabilitation program? *ARYA Atheroscler* 2016; 12(3): 138-45.
  13. Saeidi M, Mostafavi M, Heidari H, Masoudi S. Effects of a comprehensive cardiac rehabilitation program on quality of life in patients with coronary artery disease. *ARYA Atheroscler* 2013; 9(3): 179-85.

**How to cite this article:** Khazaie H, Komasi S. **The importance of screening sleep disorders in outpatient cardiac rehabilitation programs in Iran.** *ARYA Atheroscler* 2018; 14(3): 145-6.